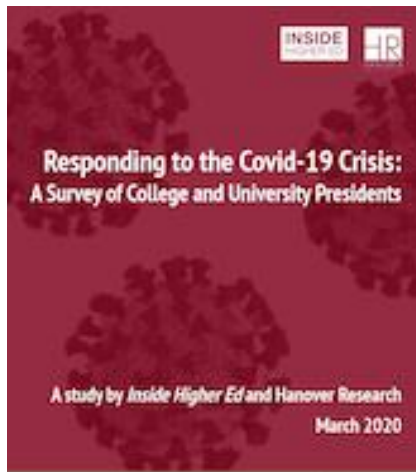




Responding to the Covid-19 Crisis: a Survey of Presidents



An *Inside Higher Ed* webcast
April 1, 2020
2 p.m. Eastern

Presenters

- Doug Lederman, editor, *Inside Higher Ed*, doug.lederman@insidehighered.com
- Scott Jaschik, editor, *Inside Higher Ed*, scott.jaschik@insidehighered.com

The Survey's Goals

- *Inside Higher Ed's* mission: keep higher ed professionals informed so they can help institutions fulfill *their* missions.
- Needed most of all in turbulent times
- Do this every day on our website, but also with surveys, special reports, events, etc.
- Published annual presidents' survey March 13. Silent on coronavirus. Two weeks later ...

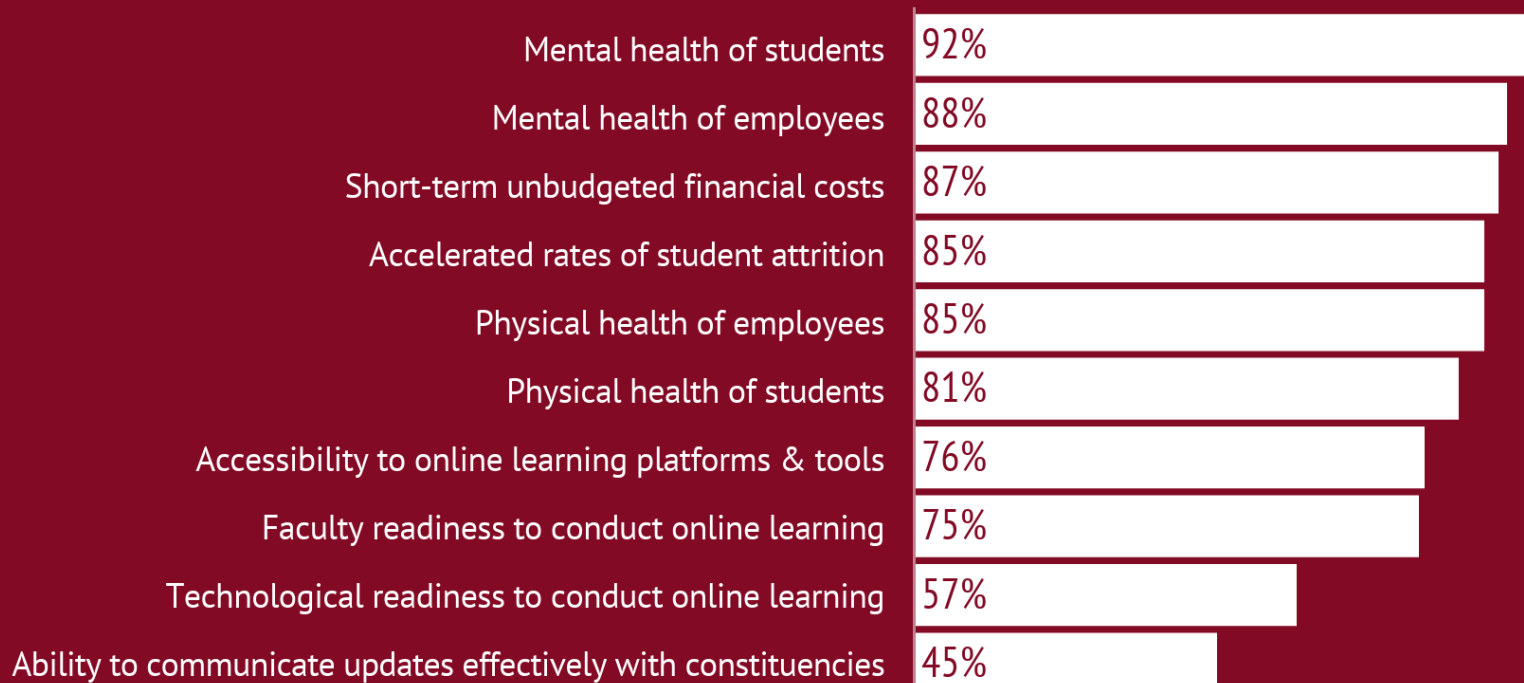
Methodology

- Questions prepared by *Inside Higher Ed*, in collaboration with Hanover Research.
- Polling conducted by Hanover March 17-19.
- 172 presidents responded; 76 public 2- and 4-year, 96 private nonprofit.
- Complete anonymity for respondents, but answers coded to allow for breakdown by sector, etc.

The Short Term: Safety, Security

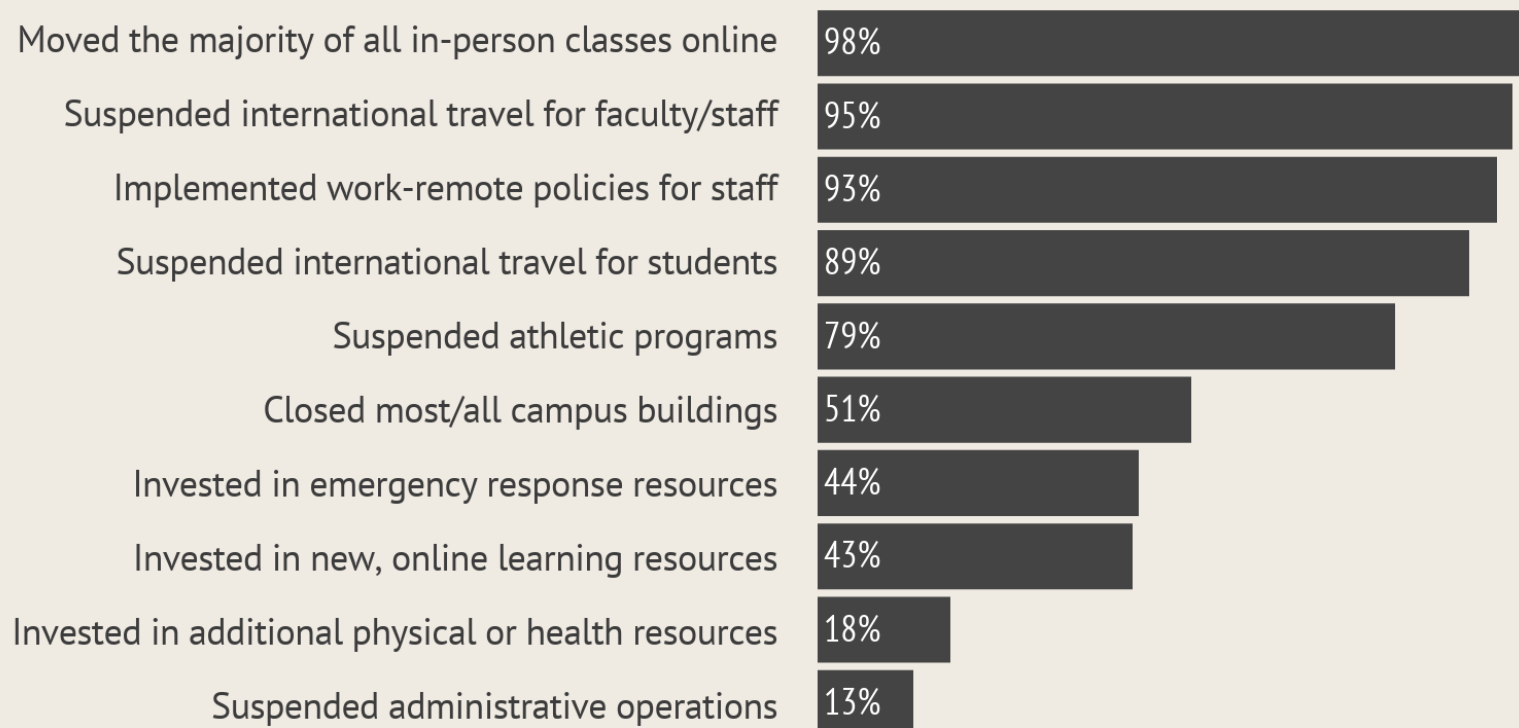
How would you rate your current level of concern related to the following immediate-term issues in regard to COVID-19? (n=164)

% Very Concerned + % Somewhat Concerned



Short-Term Concrete Actions

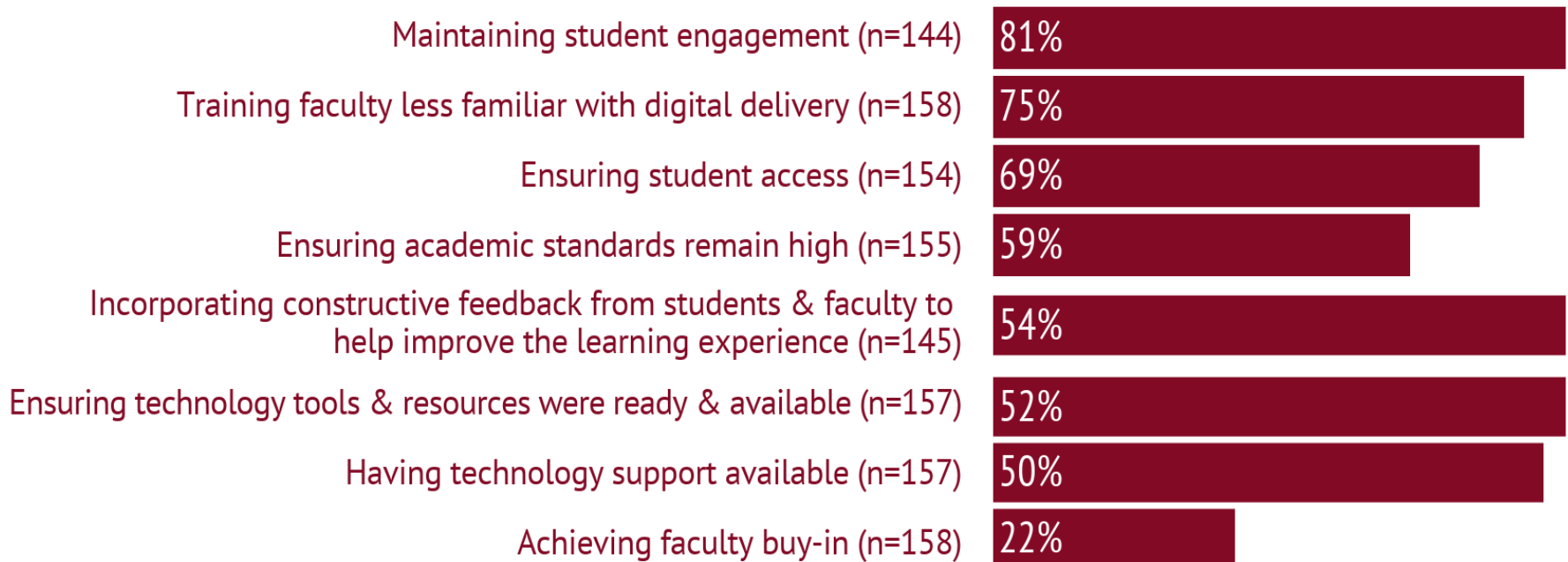
Which of the following actions have you already taken at your institution in response to COVID-19? (n=164)



Going Virtual on the Fly

How would you rate the level of challenge at your institution associated with moving in-person classes to a remote or online setting for the following activities?

% Very Challenging + % Somewhat Challenging

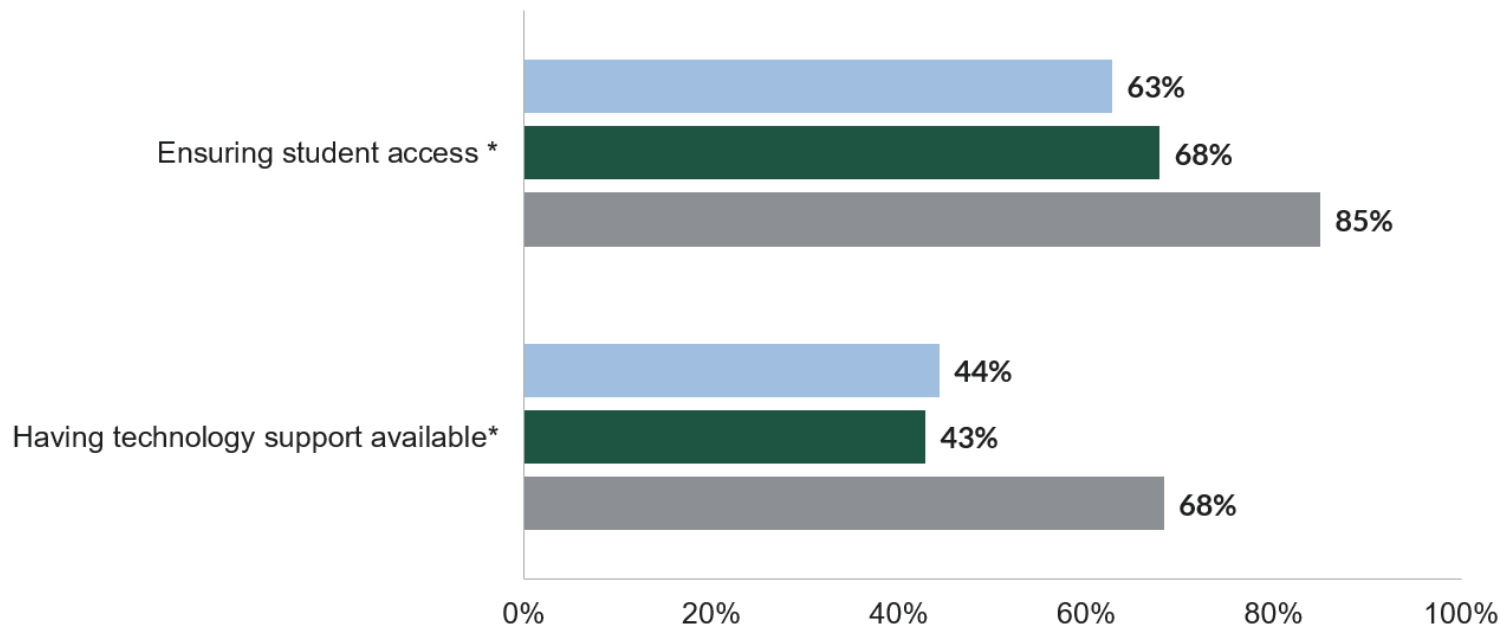


Shift Online Hits Community Colleges Hardest

How would you rate the level of challenge at your institution associated with moving in-person classes to a remote or online setting for the following activities?

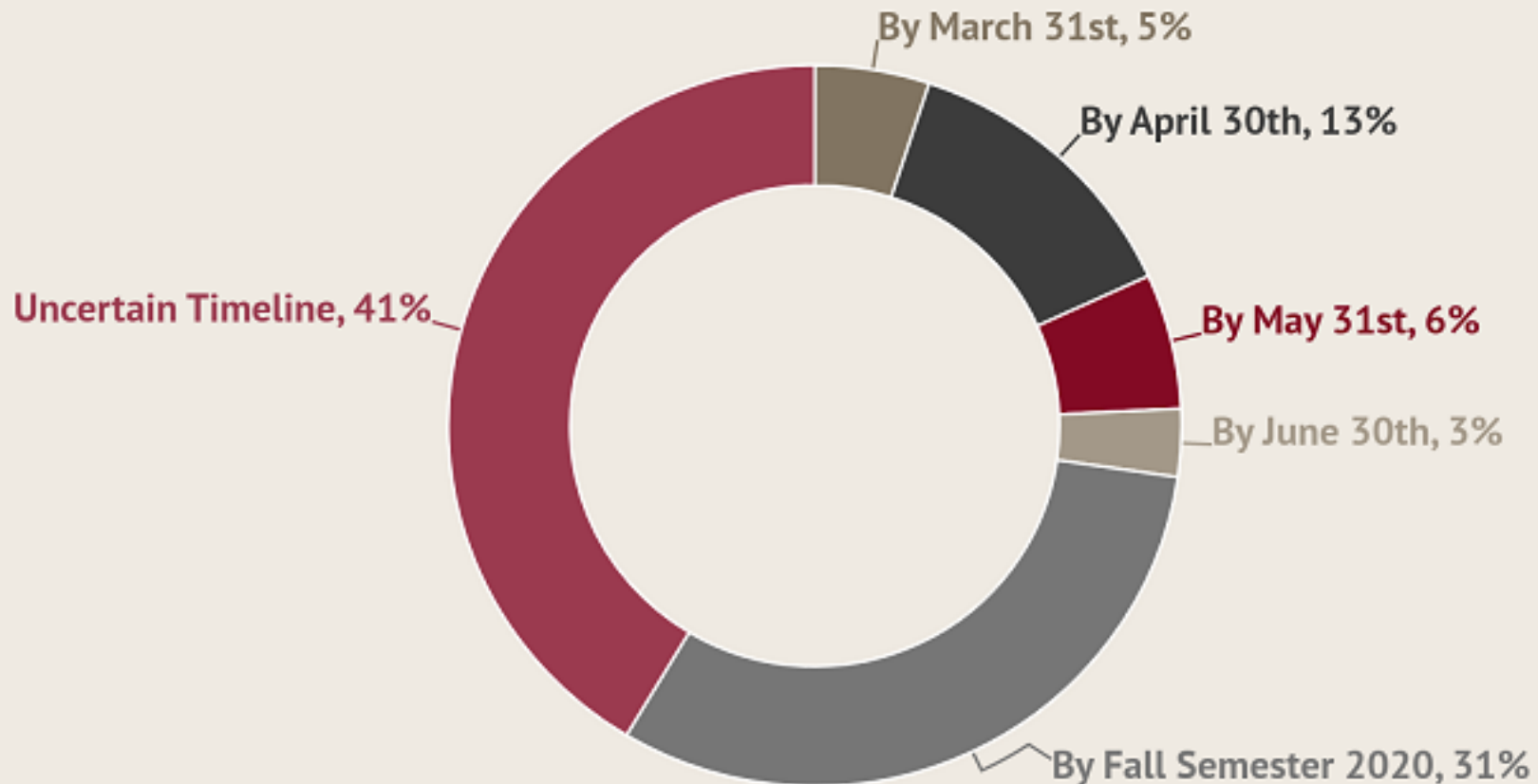
% Very Challenging + % Somewhat Challenging

■ 4-year Private (n=80-89) ■ 4-year Public (n=24-28) ■ 2-year Public (n=38-41)



When Does Normal Instruction Resume?

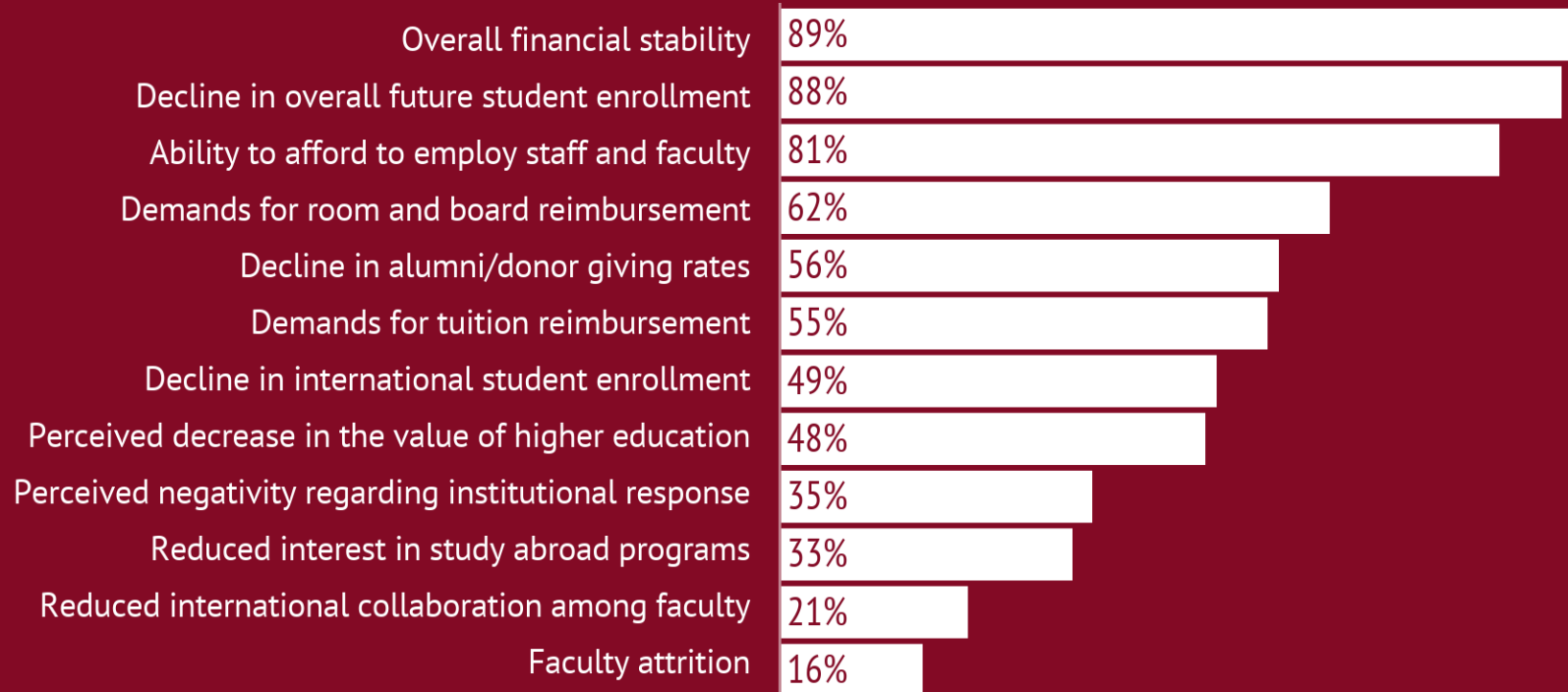
When do you expect to resume holding in-person classes? (n=157)



Looking (Slightly) Longer Term

How would you rate your level of concern with the following potential long-term issues at your institution in regard to COVID-19?

% Very Concerned + % Somewhat Concerned



Help From Elsewhere - I

**Of the following areas, where do you feel your institution needs the most additional operational support to successfully navigate beyond the COVID-19 crisis?
Select up to your top 3 options. (n=159)**



Help From Elsewhere - II

Of the following areas, where do you feel your institution needs the most additional support from state and federal governments to successfully navigate beyond the COVID-19 crisis? Select up to your top 3 options. (n=159)



89%

Financial stimulus package to compensate for losses



71%

Flexibility on regulatory limitations in providing remote learning (regular and substantive interaction, etc.)



37%

Easing of borrowing provisions to help colleges bridge short-term financial difficulties



33%

Mental health resource allocation for students



25%

Ability to leverage endowment funds without negatively impacting financial responsibility score



14%

Assistance with processing international student visas more efficiently



Different Help, by Sector

	4-year Private (n=89)	4-year Public (n=27)	2-year Public (n=43)
1	Financial stimulus package to compensate for losses (93%)	Financial stimulus package to compensate for losses (93%)	Flexibility on regulatory limitations in providing remote learning (regular and substantive interaction, etc.) (93%)
2	Flexibility on regulatory limitations in providing remote learning (regular and substantive interaction, etc.) (57%)	Flexibility on regulatory limitations in providing remote learning (regular and substantive interaction, etc.) (79%)	Financial stimulus package to compensate for losses (79%)
3	Easing of borrowing provisions to help colleges bridge short-term financial difficulties (52%)	Mental health resource allocation for students (37%)	Mental health resource allocation for students (63%)

Balancing Short Term and Long Term

- "What the president needs to do as a leader is insulate himself from the current crisis and ask, 'What is the future for my institution?' It's important to move the conversation to that vision piece."
--A former college president

Thanks to you and our sponsors

