

# COVID-19 and Your Campus:

## Piecing Together a Return to In-person Learning and On-campus Events

May 6, 2021  
2:00PM ET

*This material will be distributed following today's event*



[check-in.pwc.com](https://check-in.pwc.com)



# Today's Speakers



**Larry Gioia**

Director, Product & Service Innovation Market Leader  
Check-In for Higher Education



**Kristin Guehlstorf**

PwC Advisory Healthcare and Higher Ed Partner  
Check-In for Higher Education

# Our Firm's COVID-19 Story ...



What happened, how we pivoted,

and how we continue to evolve.



# Stages of return to campus across the continuum

Four stages: From fully remote to

back to campus life, at scale

## THE FOUR STAGES



# Stages of return to campus

## Primarily virtual learning

- Online courses, live and pre-recorded
- All / most students are remote
- If students live on campus, they are primarily in single rooms
- Food is boxed carry out only.
- Libraries, gyms closed
- No sports, no theatre
- Graduation, campus visits and orientation are virtual

## Hybrid model

- Learning is mix of in-person, virtual (live and pre-recorded), and hybrid
- Some classrooms outside
- Students live on campus, primarily in single or doubles
- Students cannot congregate in rooms, halls, etc.
- Food is boxed carry out only
- Libraries limited capacity
- Gyms closed
- No sports, no theatre (or limited and no fans)
- Graduation, campus visits, and orientation are virtual

## Learning is primarily in-person, but campus life is limited

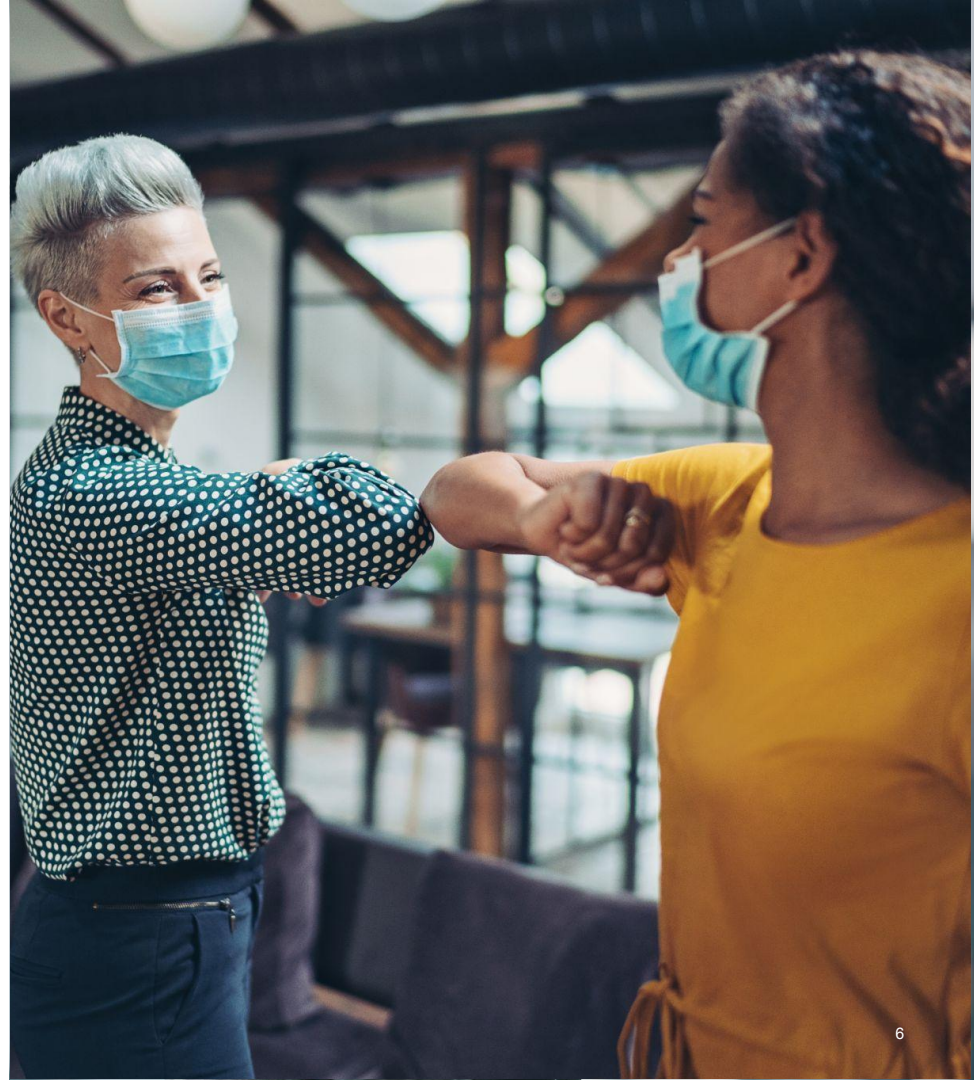
- Classes are primarily in-person
- Students live on campus including in Greek houses
- Rigorous testing / contact tracing may be in place
- Leveraging technology to restrict access, for capacity planning and contact tracing
- Cafeterias opened for dine-in, food pre-packaged
- Libraries and gyms opened with social distancing
- Sporting events and theatre are live, either with no crowd present or limited attendance to allow for social distancing
- Prospective visits primarily virtual
- Orientation may be live or hybrid, with limited activities
- Graduation may be live, but only students present

## Working, learning, living and playing are back in-person at scale

- Classes are in-person
- Students live on campus, including full Greek life
- Vaccination, testing and contact tracing programs are mature
- Leveraging technology to restrict access, for capacity planning, and contact tracing
- Cafeterias opened for dine-in, food pre-packaged
- Libraries and gyms opened
- Sporting events and theatre are live, with fans and patrons present
- Guests on campus
- Orientation live
- Graduation live

# When and how is your school planning to bring students back on-campus?

- A) Remaining virtual for the foreseeable future
- B) Moving from virtual now, to hybrid this fall
- C) Remaining hybrid, with some students on campus and some still remote
- D) Moving from hybrid now, to in-person this fall
- E) Remaining in-person, with all students on campus, learning predominantly in-person
- F) Moving from virtual now, to in-person this fall
- G) Moving to fully in-person, no restrictions





# The State of the State Getting to know your campuses

Are you requiring students, faculty, staff, and guests to complete a daily CDC health survey?

- No
- Yes
- Only if the state requires it





## How are you using testing on your campus?

- Not using
- Optional testing available on campus
- Mandatory testing required periodically (e.g., every other week)
- Mandatory testing required 1-2 times per week in order to have access to campus buildings



# What form of contact tracing are you using at your school?

- Not using
- Manual (e.g.: interviews, video footage review, badge records)
- Manual + Automated (i.e. hybrid of both)
- Automated (e.g.: app, devices that collect proximity)

 ENTER NEW CASE

Reported Cases

26

Total Potential Exposures

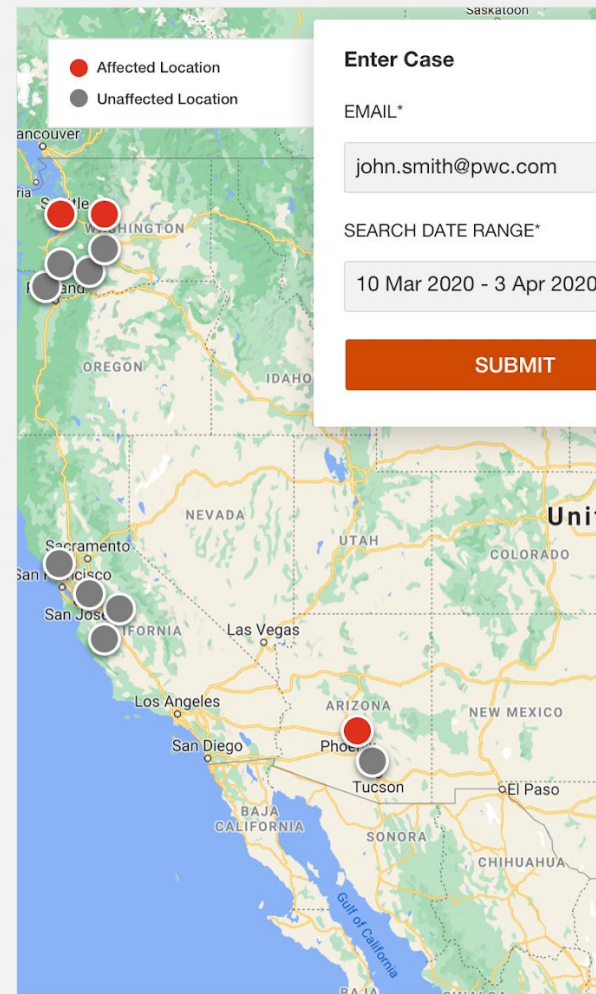
222

Location Affected

27

% Registered Devices

7%



Are you considering making vaccination a mandatory requirement as a part of your return to campus strategy?

- No
- Yes
- Undecided



# By the numbers ...



## Preventative screens

# 42

**states** either require or recommend employee temperature or daily health screenings.

*Source: Littler, This Won't Hurt a Bit: Employee Temperature and Health Screenings – A List of Statewide Orders, March 8, 2021*



## Testing

# 96%

of infections could be prevented from routine screening testing on college campuses in conjunction with extensive physical distancing and mandatory mask policies.

*Source: Center for Disease Control, Interim Guidance for SARS-CoV-2 Testing and Screening at Institutions of Higher Education, March 17, 2021*



## Contact tracing

# Many

solutions to trace exposure to infections that vary in nature: manual, semi-automated, and automated.



## Vaccines

# >100

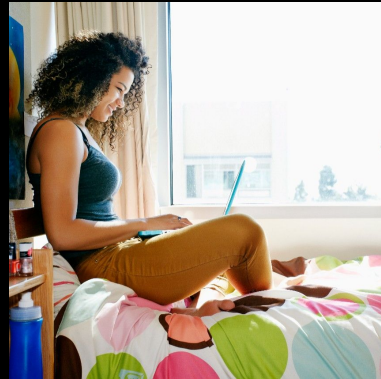
US colleges and universities are now requiring students to get Covid-19 vaccinations.

*Source: CNN, More than 100 US colleges and universities are now requiring students to get Covid-19 vaccinations, April 29, 2021*

While factors shaping fall's return remain unpredictable, let's not forget what our campus communities desperately want and need ...



**To work safely  
and in-person**



**To live safely  
and in community**



**To learn safely  
and in-person**



**To play safely  
and in community**

... to promote mental and physical well-being and development.

# We see four key pieces of the puzzle that can serve as a foundation to safely returning to campus in the fall ...



A layered and measured approach to protecting your people, your campus, and your community



A shift away from crisis mode (back) to crisis / campus management



The role of a COVID-19 Compliance Officer (or committee equivalent)



Enabling technology capabilities with an intent focus on privacy, transparency, and proactive decision making

## A Layered Approach ...



- Facilities and air filtration
- Symptom checking
- Health checks / surveys
- Social distancing & masks
- Testing program
- Contact tracing
- Vaccinations
- Opportunities to leverage technology at scale

Research

## 11 Ways to Protect Privacy When Using Student Data

### *In Person or Virtual? Covid Complicates College Commencements*

With vaccinations on the rise, many colleges are planning in-person commencements, sowing frustration on campuses sticking to online ones.

### Contact-Tracing Technology: A Key to Reopening

### Reopening Schools Issue Brief: Thermal Scans and Temperature Checks

### Contact Tracing Task Force works to limit the spread of COVID-19

### Charting a New Normal

Four-year institutions are pushing to hold as many in-person classes as possible. Community colleges have a different calculation to make.

### What Will College Be Like in the Fall?

Administrators, professors, a union representative and students consider the new realities of life on campus in the midst of a pandemic.



- Moving from crisis mode to the “future campus”
- Do your “SOPs” make sense in today’s environment?
  - Travel protocols (including international)
  - Large event / guest protocols
  - Sick / quarantined / isolated pockets
- Operationalizing “crisis / campus management”
- Managing exceptions
  - Faculty considerations
  - Immunocompromised faculty, staff & students
  - Sick / quarantined / isolated pockets
  - Vaccination protocols
- Managing new outbreaks
- Community engagement





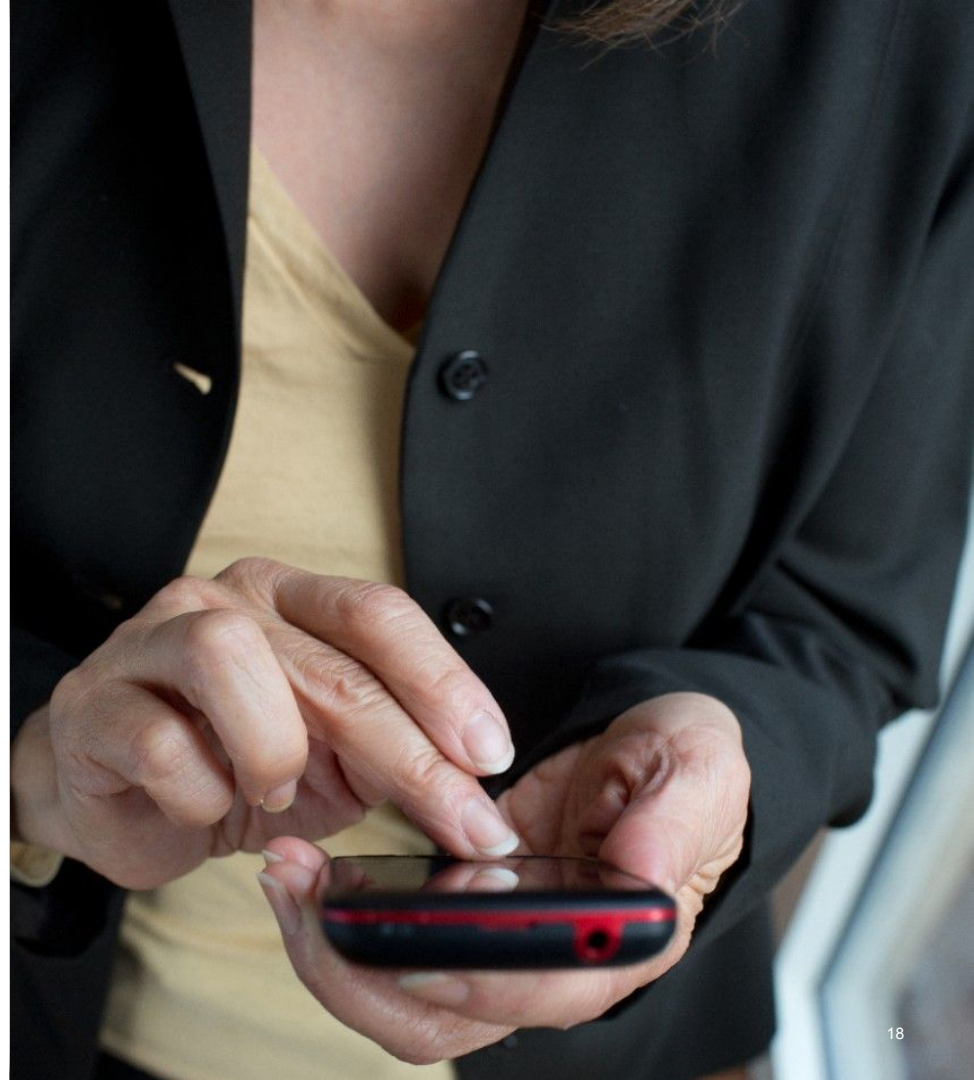


- Part-time coach, part-time cop, full-time community builder and convener
- “Air-traffic control” working in close collaboration and coordination with campus safety, facilities management, IT, student health & wellness, office of student life, and public health organizations
- Serves as a direct advisor to the university administration and is an extension of the President’s staff
- Leads through influence and is a convener of university stakeholders; necessary to define, execute, and adapt policies and procedures
- Federated or centralized model, depending on size of the school





- Emphasis on contactless and frictionless campus experience (e.g., mobile apps, geofencing, digital contact tracing, etc.)
- Consider the ID card as a central system of engagement
- Contact tracing versus contact tracking technology considerations
- If you are aggregating data ... where will it be stored? For what purpose will it be used? How long will it be retained? Who will have access to it?
- Transparency in strategy, protocols, procedures and outwards communication have direct correlation to adoption
- Apply same level of rigor for guests and external campus community visitors



# Considerations for Next Steps

## Prevent

- ✓ Take preventative action
- ✓ Mitigate infection risks
- ✓ Adjust schedules
- ✓ Manage capacity

## Trace

- ✓ Streamline contact tracing
- ✓ Communicate transparently
- ✓ Act swiftly

## Respond

- ✓ Identify exposure risk early
- ✓ Develop data-driven dashboards
- ✓ Develop a communications plan



Questions?

# Explore Higher Education COVID-19 resources



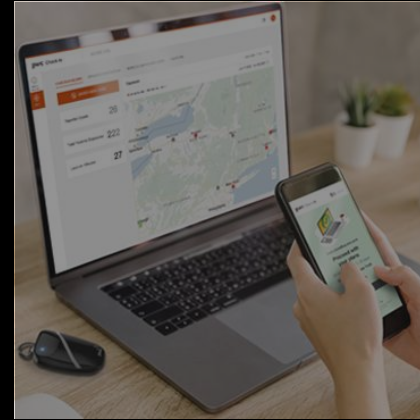
**[Ebook] 3 considerations for returning to the classroom**

[Read it here.](#)



**[Video] Check-In's automatic contact tracing for education**

[Watch it here.](#)



**[Overview] Check-In for educational events**

[Download it here.](#)



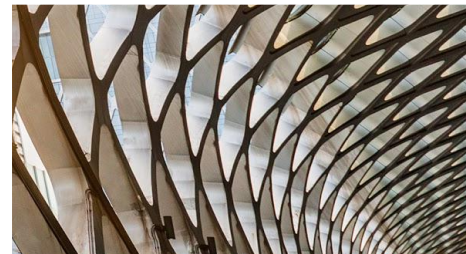


Thank  
You



© 2021 PwC. All rights reserved. PwC refers to the US member firm, and may sometimes refer to the PwC network. Each member firm is a separate legal entity. Please see [www.pwc.com/structure](http://www.pwc.com/structure) for further details. This content is for general information purposes only, and should not be used as a substitute for consultation with professional advisors.

Not for further distribution without the permission of PwC. 03-09-2021.



# Today's Speakers Contact Information



**Larry Gioia**

Director, Product & Service Innovation Market Leader  
Check-In for Higher Education

(412) 916-9960

[larry.gioia@pwc.com](mailto:larry.gioia@pwc.com)



**Kristin Guehlstorf**

PwC Advisory Healthcare and Higher Ed Partner  
Check-In for Higher Education

(618) 407-7746

[kristin.j.guehlstorf@pwc.com](mailto:kristin.j.guehlstorf@pwc.com)