



ARKANSAS STATE UNIVERSITY CONVERTS 2900 VIDEO FILES IN JUST ONE DAY

By Arkansas State University, K16 Solutions, and
Kaltura

SEPTEMBER 30, 2021



OUR SPEAKERS



KEVIN DOWNUM

Director of Academic Technology at
Arkansas State University



STEVE MILDNER

Chief Revenue Officer at
K16 Solutions



DARREN STAHL

Senior Director at Kaltura



JOSH KIM, Ph.D.

Director of Online Learning at
Dartmouth College and Inside Higher
Ed Contributor





ARKANSAS STATE UNIVERSITY



Kevin Downum



ABOUT ARKANSAS STATE UNIVERSITY



FOUNDED: 1909

Arkansas State University is the catalyst for progress in our state, the Delta and the Mid-South region.



INSTITUTION: SECOND LARGEST IN ARKANSAS

Serving 14,000 students, Arkansas State is a doctoral-level national institution with more than 150 degrees areas of study, and a diverse student body from across the nation and the world.



OUR MISSION: AWAKE, NURTURE & EMPOWER

Arkansas State educates leaders, enhances intellectual growth, and enriches lives.

WHY WE MADE THE DECISION TO SWITCH VIDEO PLATFORM PROVIDERS

Kaltura offered many things that our campus will utilize, such as **MediaSpace, Webcasting, Zoom integration,** and **centralized storage** for all media content.



THE PROCESS WE TOOK TO EVALUATE PROVIDERS



Discussions with the CIO
and several
folks from ITS



Asked and listened
to what faculty needed
from a
media provider



Composed a
faculty task force
(representing multiple
colleges on campus) to
review Kaltura



kaltura



Darren Stahl

ABOUT KALTURA



750+

Employees



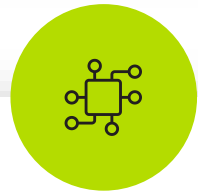
1000+

Customers



2009

Founded



150+

Tech Partners



100M+

End Users



20B+

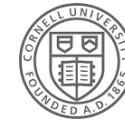
Annual Stream
Run Rate

KALTURA SERVES 600+ HIGHER ED INSTITUTIONS

7 of 8 Ivy League Schools ; 60% of R1 ; 70% of the US News and World Report of top 20 educational institutions



INDIANA UNIVERSITY



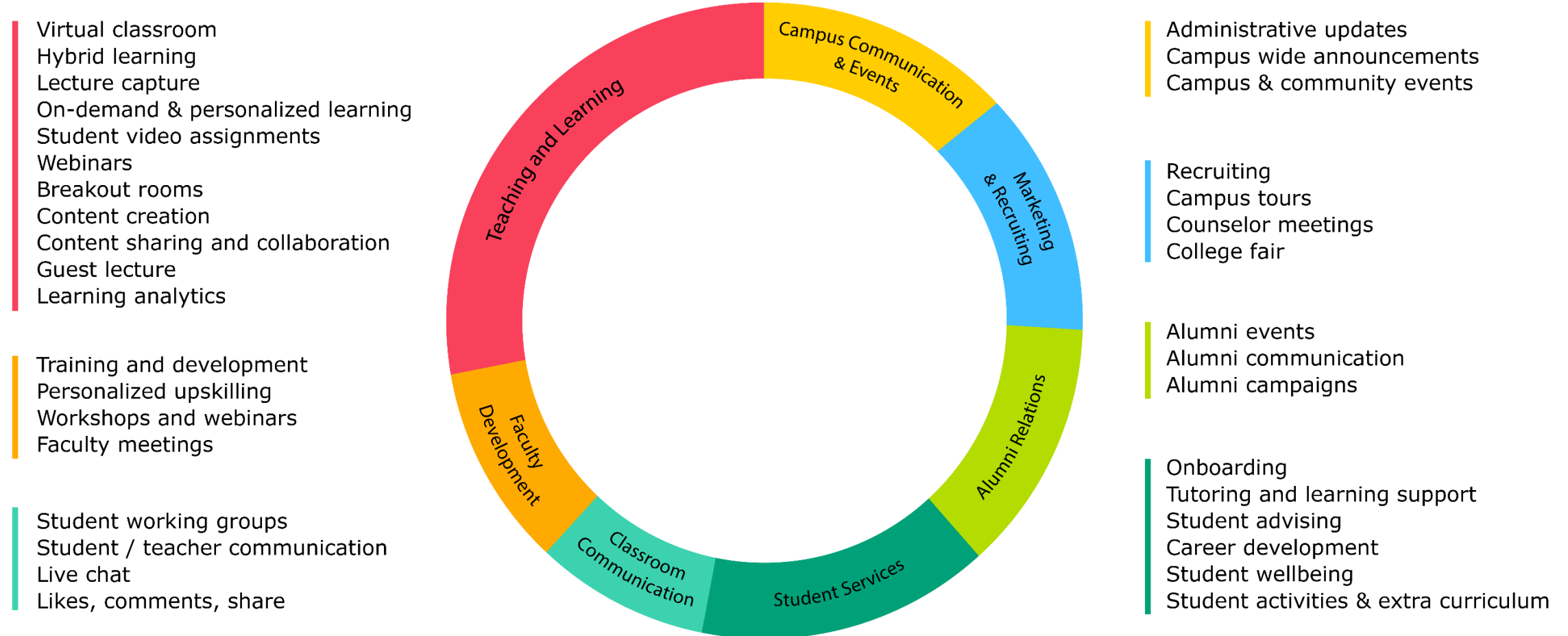
Cornell University



HOKKAIDO UNIVERSITY

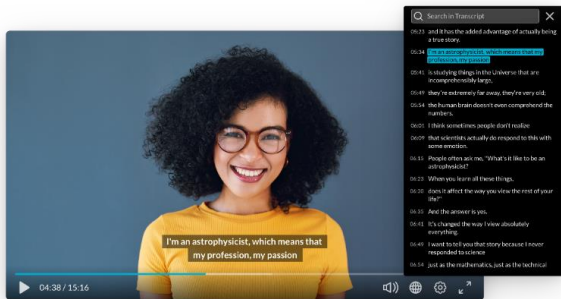


POWERING ANY VIDEO EXPERIENCE ACROSS CAMPUS

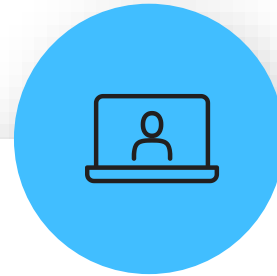


THE EDUCATION VIDEO CLOUD

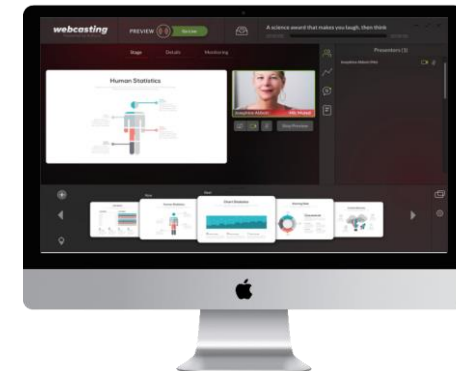
Powering On Demand, Real-Time, and Live Experiences – In the Flow of Learning



On Demand



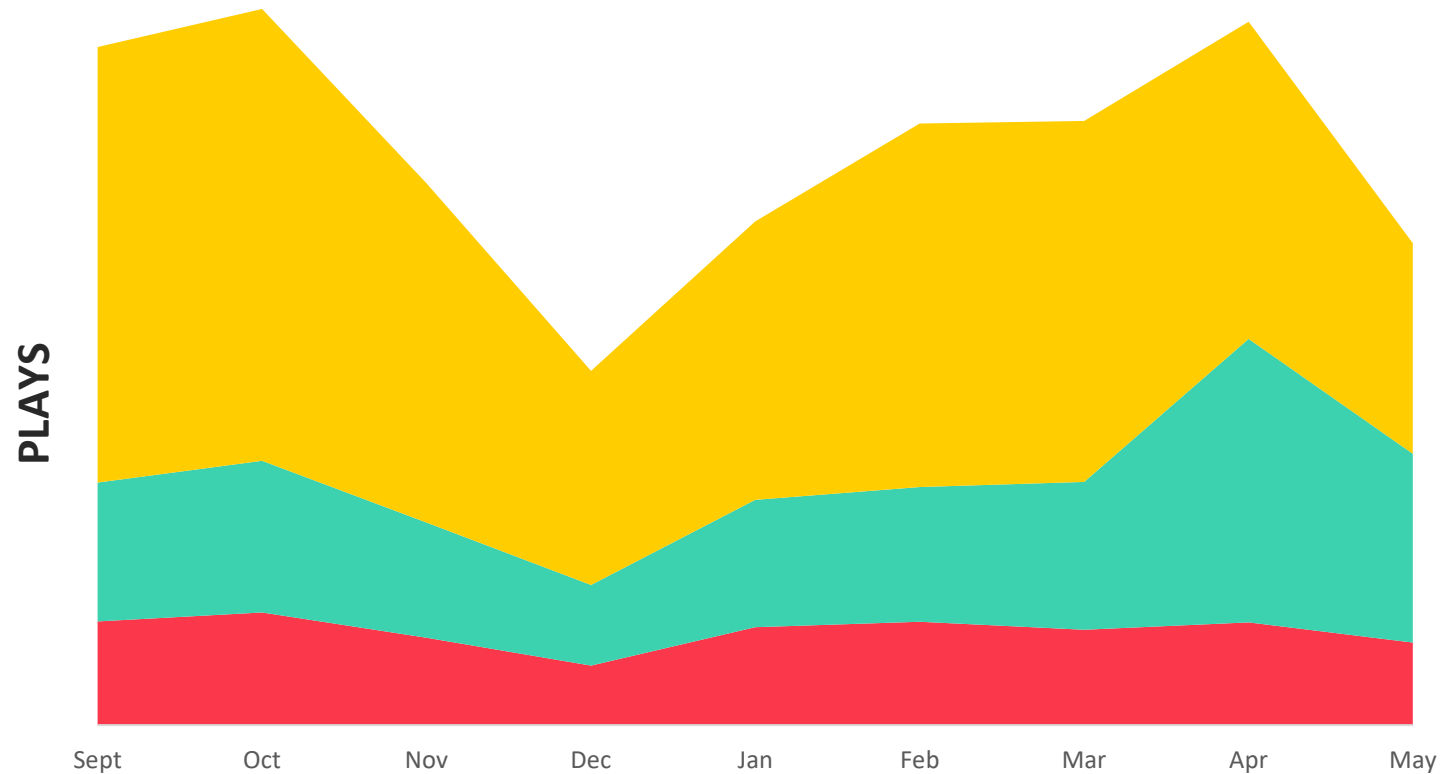
Live Classroom



Live Broadcast

VIDEO USAGE CONTINUES TO ACCELERATE

● '18-'19 ● '19-'20 ● '20-'21



Video usage increased **62%** between '18 and '19 academic years and **117%** between '19 and '20 academic years. We expect **continued surge as we enter the '21 school year** due to uncertainty around COVID and the new state of the market.

HOW WE CONVERTED ALL THEIR VIDEO CONTENT TO A NEW PLATFORM



Kaltura video migration
(scope, mapping
metadata, etc.)



K16 helped with replacing
old video links with new
video links

THE TIME SAVED BY USING AN AUTOMATED SOLUTION INSTEAD OF DOING IT MANUALLY

- ✓ There were **2,900** links that were updated.
- ✓ Those links were spread over **1,105** courses.
- ✓ Of the 1105 courses, **848** were fall 2021 live courses.
- ✓ The remaining **257** courses were development shell courses.
- ✓ This work was in **ONE** day.

If this had been a manual process:

- ITS resources would have been necessary to query the database and locate which courses had links.
- Courses with just one or two links could have been update relatively quickly
- Course with multiple links could take a lot of time (searching each content module, and possibly the folders within the module).
- Taking into account the time needed to embed a link, the possibility of multiple links, internet speed, random distractions, etc., I think a conservative estimate would be 4 minutes per course.
- $2900 * 4 = 11,600$ minutes; $11,600 / 60 = 193$ hours; $193 / 40 = 4.8$ weeks
- It would have taken 1 full-time person nearly 5 weeks of solid, continuous work.
- Because of the timeline, we would have needed to change the links within the first week.
- In reality, this project would have required 6.5 people (6 hours/day changing links, 2hours/day for usual responsibilities)



K16 SOLUTIONS



Steve Mildner, CRO



ABOUT K16 SOLUTIONS



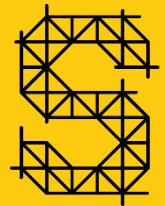
FOUNDED: 2018

Co-Founders worked in academia



OUR MISSION: TO SOLVE LMS PROBLEMS

Course migration & course design & course archiving



FIRST PRODUCT: SCAFFOLD

Migration / Design / Archiving

ABOUT OUR LMS MIGRATION



SUPPORTED LEARNING PLATFORMS



125,000+ VIDEO FILES

Thousands of video files completely converted from one platform to another in hours

6,000+ COURSE TRANSFERS

Avg - Per week / Per institution

500,000+ COURSES

Processed over the last year

EARLY FEEDBACK FROM STUDENTS, FACULTY, AND STAFF ABOUT THE NEW PLATFORM

- We have not had a lot of feedback yet, since the semester just started.
- The feedback we have received has been positive.





**LESSONS LEARNED & ADVICE
FOR OTHERS**



1

Consider format of videos

2

Consider how you'll migrate & convert video files

3

Consider needs of faculty

QUESTIONS?

scaffold@k16solutions.com

SOME SCHOOLS WE'VE HELPED



**From Sakai &
Blackboard to Canvas**

Migrated from multiple
platforms



Moodle to Canvas



Sakai to Canvas

**NEW YORK INSTITUTE
OF TECHNOLOGY**

Blackboard to Canvas



**Blackboard & Moodle to
Canvas**



Blackboard to Canvas



D2L to Canvas

Migrated 20,000 Courses
in Ten days



Blackboard to Canvas



Moodle to Canvas



**Blackboard Classic to
Blackboard Ultra**

Required full migration



Sakai to Canvas



Blackboard to Canvas

RESOURCE PAGE

4 Attributes of Successful LMS Migrations



Top 4 Attributes of Successful LMS Platform Migrations

LMS platform migration doesn't have to be complicated. Traditionally, LMS migration has been a complicated process—taking months and even years to complete a successful transition. With so many considerations like faculty impact, student experience, project timelines, and utilization of resources, it becomes increasingly difficult for many schools to make the appropriate migration decisions.

In this guide, we walk through the top attributes of successful LMS platform migrations, including:

- Automated Course Migration
- Speed-of-Delivery in Course Transfers
- Ready-to-Teach Courses (Accuracy in Course Transfers)
- Affordability



GET GUIDE

Mohawk College migrates 20,000 courses in Ten Days



Mohawk College Migrates 20,000 Courses in Ten Days with Scaffold Migration

CHALLENGE

Mohawk enlisted the help of K16 Solutions to overhaul its migration before the end of its current LMS contract.

- Strict Timeline**
Mohawk had just a few months before its current LMS contract expired, creating a tight timeline for a migration.
- Faculty Involvement**
Facilitating a migration mid-semester, Mohawk wanted the transition to be as seamless as possible for faculty.
- Student Experience**
Supporting both online and in-person classrooms, Mohawk's student and faculty members are increasingly reliant on a consistent LMS experience.

In consistent collaboration, Mohawk and K16 Solutions established a game plan that not only satisfied Mohawk's strict timeline, but required little to no involvement with faculty members outside of regular classroom hours.

OVERVIEW

Located in Ontario, Canada, Mohawk College is a publicly-funded college of applied arts and technology. With both online and in-person courses, Mohawk supports a student population of 30,000 and a faculty of 1,100.

Nearing the end of its spring semester, Mohawk faced the end of its contract with its current learning management system (LMS). After choosing to migrate to LMS from D2L to Canvas, Mohawk struggled to find a simple, easy approach to migration. The school decided to place a manual migration before concluding that a year-long, manual migration was not a viable option for faculty amidst an ongoing school semester.

Cebert Adamson
Mohawk College Dean of Continuing Education & Academic Quality



GET CASE STUDY

Ottawa Univ moves from Blackboard Original to Ultra



Ottawa University Seamlessly Migrates Courses from Blackboard Classic to Ultra Using Scaffold Migration

CHALLENGE

Rather than simply updating its current software and processes, Blackboard Ultra required a complete course migration.

- Full Course Migration**
Upgrading to Blackboard Ultra involved a full, campus-wide migration process that impacted both students and faculty members.
- Outdated Content**
After using Blackboard for an extended period of time, Ottawa had a plethora of course content that was outdated, requiring updated, student-friendly usability.
- Programmatic Modernization**
Based on performance trends, the majority of students were accessing their LMS via mobile phone. As a result, Ottawa needed to prioritize a simplified mobile user experience that supports its student's needs.

Like many educational institutions, Ottawa was impacted by the global pandemic early in its engagement with K16 Solutions—adding another level of difficulty and shifting priorities to support its online learning environment.

OVERVIEW

With a network of campuses located throughout the U.S., Ottawa University is headquartered in Ottawa, Kansas. Comprised of over 4,000 students, Ottawa University provides both undergraduate and graduate-level curriculum in both an in-person and online format.

Historically, Ottawa has long depended on Blackboard as its learning management system (LMS). In order to stay up to date with Blackboard's functionalities, Ottawa faced a platform upgrade to Blackboard Ultra.

Matthew P. Filla
Academic Technology Systems Administrator
Ottawa University

"K16 saved a huge amount of work for faculty, eliminating the need for them to reconfigure and reform their courses, content, quizzes, and other course materials. The consistency of the data and files that were migrated helped the CTL team to inform, train, and orientate faculty and staff on the new platform."

"The team at K16 Solutions went the extra mile to develop a custom solution for converting our courses from Blackboard Original to Blackboard Ultra, addressing the specific nuances of our online learning context. Moving to Ultra is no mean feat and we feel fortunate to have been able to work with such a strong and responsive team."



GET CASE STUDY

Rutgers Univ migrates from Sakai & Blackboard to Canvas



Rutgers Accelerates the Transition to a New LMS Platform Using Scaffold Migration

CHALLENGE

- Stakeholder Buy-in**
With so many departments and colleges, Rutgers struggled to get widespread approval of a consolidated LMS migration.
- Departmental Requirements & Expectations**
Being siloed in different LMS platforms, the school's migration had to meet hefty requirements and expectations for all schools, faculty, and departments involved.
- Faculty Expectation & Instructional Design Support**
While some faculty had access to instructional design experts, many had to design and build their own courses. Because of this, Rutgers had to consider the staff members they were asking to learn a new tool.

OVERVIEW

As the eighth-oldest college in the U.S., Rutgers University has established itself as a leading research institution. With three locations throughout New Jersey, Rutgers is headquartered in New Brunswick with a total student population of over 50,000 and almost 9,000 faculty members.

Supporting a widespread educational network, Rutgers was operating with multiple learning management systems, including Blackboard Classic and Sakai. That increased across departments and colleges. After assembling an internal committee focused on improving the student experience, Rutgers ultimately decided that a consolidated migration to Canvas was needed.

"When K16 Solutions joined us at the table to discuss the unique challenges around our LMS transition to Canvas, they did not come with a quick fix to sell us, but rather an offer to partner with Rutgers in identifying the issues, developing a solution, and implementing it in a way that would meet the needs of all our stakeholders. Throughout the experience, the K16 team showcased their technical prowess, willingness to collaborate, and most importantly, empathy for our faculty and students."

Charles A. Collick Jr.
Associate Director, Rutgers
IT Accessibility & Instructional Technology



GET CASE STUDY