



IT LEADERSHIP PANEL:

# EXPLORING 5 KEY TRENDS IN HIGHER EDUCATION

Logitech | Public Sector  
March 21, 2023 | 11 am PT/2 pm ET



**Bryan Roesslet**  
Chief Technology Officer  
University of Texas System



**Kevin Reeve**  
Director & Visionary  
Utah State University



**Eric Kunnen**  
Senior Director, IT Innovation & Research  
Grand Valley State University



**David Rhoads, Ed.D. Director**  
Institute for Faculty Development  
Vanguard State University

# HOUSEKEEPING ITEMS

---



Ask Questions  
Anytime Using  
the Q&A interface



Slides & Link  
to Recording  
Will be Emailed

# OUR PANELISTS



**Bryan Roesslet**  
Chief Technology Officer



THE UNIVERSITY  
of TEXAS SYSTEM



**Kevin Reeve**  
Director & Visionary



UtahState  
University



**Eric Kunnen**  
Senior Director  
IT Innovation & Research



GRAND VALLEY  
STATE UNIVERSITY



**David Rhoads, Ed.D. Director**  
Institute for Faculty Development



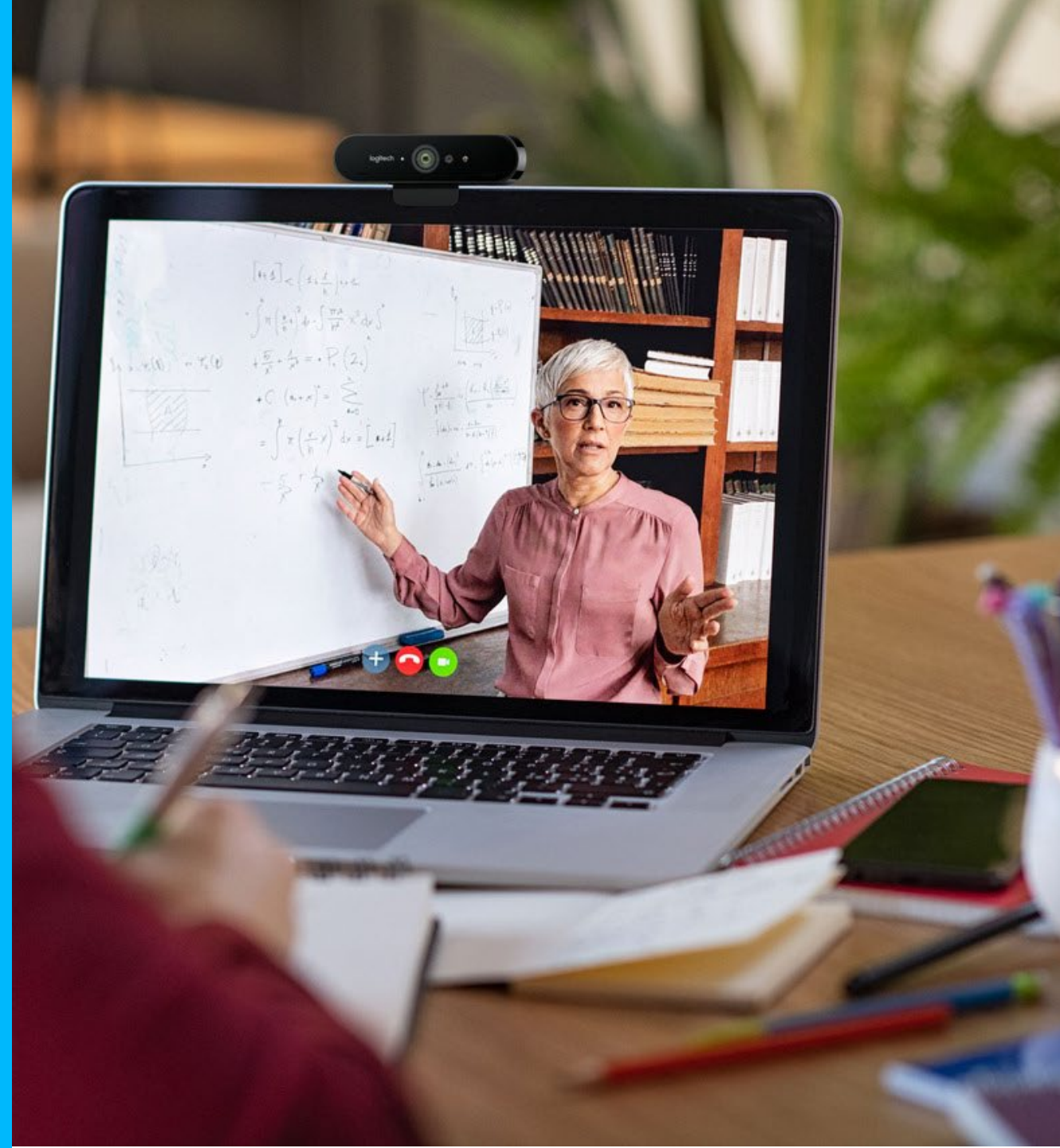
VANGUARD  
UNIVERSITY

# 2023 HIGHER EDUCATION TREND WATCH

Rank	Trend
1	Increasing need for data security and protection against threats to personal privacy
2 ★	Continued adoption and normalization of hybrid and remote work arrangements
3 (tie) ★	Continued resignation and migration of leaders and staff from higher education institutions
3 (tie)	More calls for data informed decision making and reporting
5 ★	Continuation and normalization of hybrid and online learning
6 ★	Expansion of the digital transformation of higher education
7 ★	Rising costs of higher education as public perceptions of its value are declining
8	Focus on increasing institutional resilience
9	Widespread efforts to understand and address discrimination and inequity
10	Need for improved data literacy and skills to keep up with growth in big data and analytics



# Trend #1 Expansion of Digital Transformation of Higher Education



# **Trend #2 Continuation & Normalization of Hybrid & Online Learning**





**Trend #3  
Continued  
Adoption &  
Normalization  
of Hybrid &  
Remote Work**





# Trend #4: Resignation/ Migration of Leaders & Staff



# Trend #5 Rising Costs of Higher Ed as Public Perceptions of Value are Decreasing





# EMPOWERING INSTITUTIONS

Build dynamic and collaborative teaching and learning experiences to improve student outcomes.

## ATTRACT



**OPTIMIZE EXPERIENCES**

## ENGAGE



**FOSTER ENGAGEMENT**

## RETAIN



**ACCESSIBLE & EQUITABLE**

# ENRICH ANY EDUCATION ENVIRONMENT

Durable, flexible, adaptable, easy-to-use solutions for any education environment.



Personal Offices



Remote Workspaces



Hybrid Classrooms



Administrative Conference Rooms

## Personal Productivity Devices



Headset



Webcam



Keyboards and Mice



Microphones

## Classrooms/Shared Spaces



Conference Cameras



Room Solutions



Whiteboarding





# ADMINISTRATORS | EDUCATORS | STUDENTS

Reliable, high-quality audio and video experiences for teaching and learning



## ZONE TRUE WIRELESS EARBUDS

Built for business Bluetooth® earbuds with a noise-canceling mic that allow you to bring your personal style to video meetings





## LOGI DOCK

All-in-one docking station with meeting controls and speakerphone to reduce desktop clutter and improve productivity

# LOGI DOCK

An all-in-one docking station that simplifies workspaces, streamlines workflows, and dramatically improves collaboration experiences. Provides a single connection point for all your peripherals.

## FEATURES

- 1 One Touch to Join
- 2 Meeting Controls
- 3 6 Beamforming Microphones
- 4 Easy Audio-Switch
- 5 Calendar Integration + LED Meeting Reminders
- 6 Connects up to 5 USB Peripherals and Two Monitors



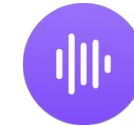
**DOCKING STATION**



**PERSONAL MEETING CONTROLLER**



**SPEAKERPHONE**



**SOFTWARE SUPPORT**



**EXTENDED WARRANTY**

[logitech.com/logidock](https://www.logitech.com/logidock)





## **BRIO**

Premium 4K webcam with HDR technology to help you look great in any lighting environment and Windows® Hello support

## ZONE WIRELESS HEADSET

Bluetooth headset designed to help you work from anywhere with exceptional sound, flip-to-mute mic, and Qi wireless charging





logitech™

**We're helping make  
hybrid work and learning a success**



LOGITECH CONFIDENTIAL



# A SINGLE USER EXPERIENCE IN EVERY ROOM, EVERYWHERE

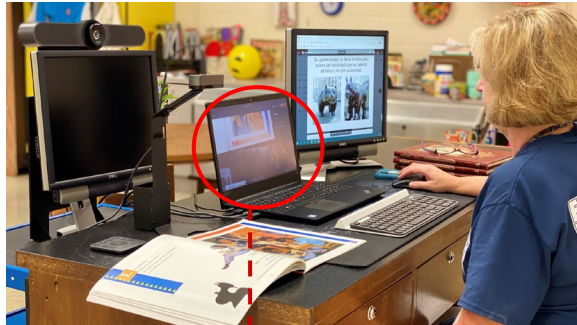


Simplified user interface enables staff to focus on **curriculum, engagement,** and well-being of **students.**



# DEPLOYMENT OPTIONS

## BYOD



## DEDICATED COMPUTE



## APPLIANCE



Ultimate **choice** and **flexibility** for your environments.

# ON CAMPUS SOLUTIONS



MEETUP WITH TAP FOR SMALL MEETING ROOMS



MEETUP WITH TAP  
+ EXPANSION MIC\* FOR  
SMALL MEETING ROOMS

UP TO 8 SEATS WITH EXP. MIC



RALLY WITH TAP FOR MEDIUM MEETING ROOMS

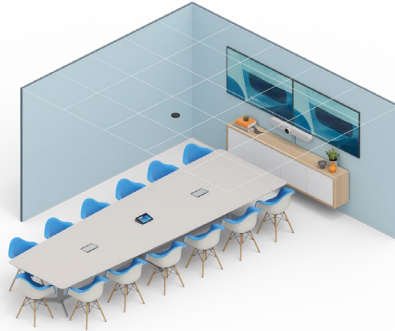


RALLY PLUS WITH TAP FOR LARGE MEETING ROOMS

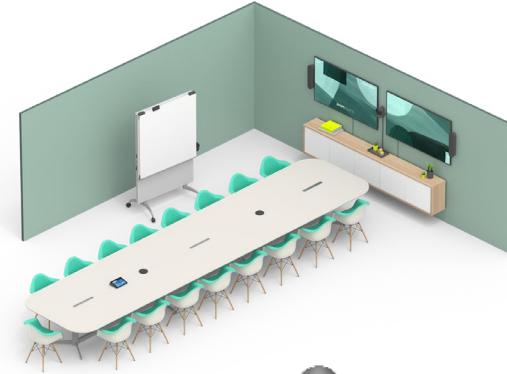
# RALLY BAR FAMILY



RALLY MINI BAR



RALLY BAR

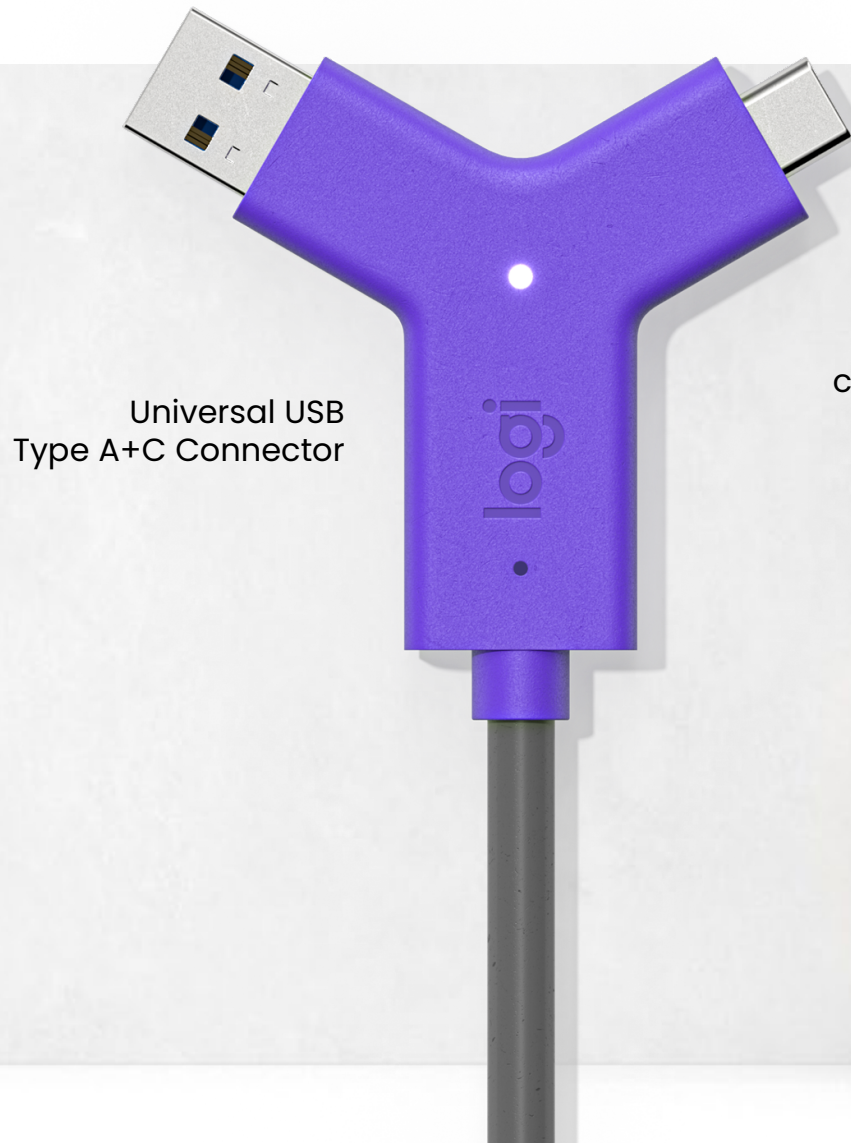


RALLY PLUS WITH ROOMMATE





# SWYTCH



Universal USB  
Type A+C Connector

USB Power Delivery  
(Type C 60w)

Laptop audio plays through  
conference camera speakers

Display & content sharing up  
to 4K/60 fps



Camera resolution  
up to 4K/30 fps



Magnetic dock

USB + HDMI on  
one cable

Works with Tap rooms,  
including Microsoft Teams  
Rooms and Zoom Rooms

# LOGITECH RIGHTSENSE:

## Smart Automation for Better Video Meetings



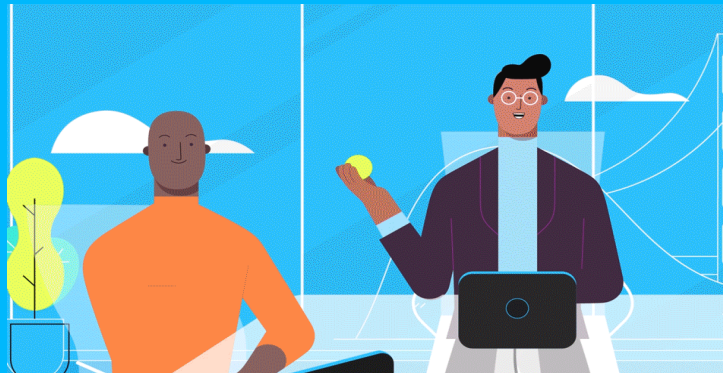
Logitech RightLight™



Optimize light balance and color to prioritize the appearance of faces and render natural-looking skin tones, even in dim or backlit conditions.



Logitech RightSight™



Camera control automatically moves the lens and adjusts the zoom to comfortably frame meeting participants just right in rooms of any shape or size.



Logitech RightSound™



Improve voice clarity by suppressing background noise and echo, auto-leveling voices, and focusing on active speakers so that everyone in the meeting can hear and be heard.

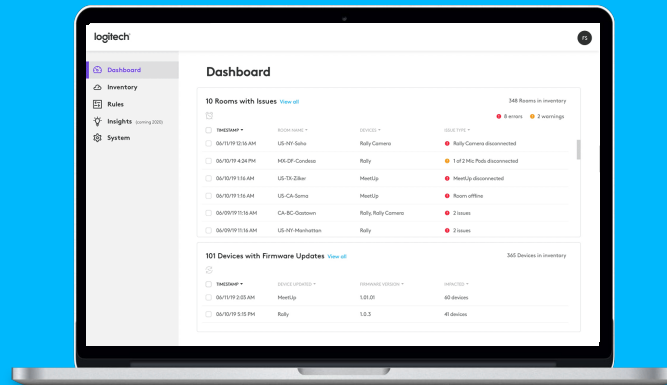
# LOGITECH SYNC:

## Seamless Administration and Control

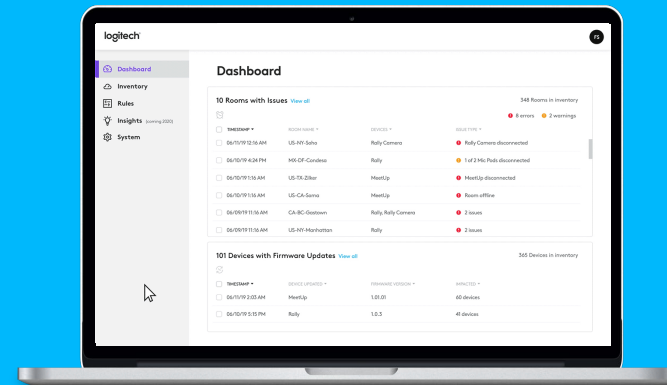
### MONITORING

### MANAGEMENT

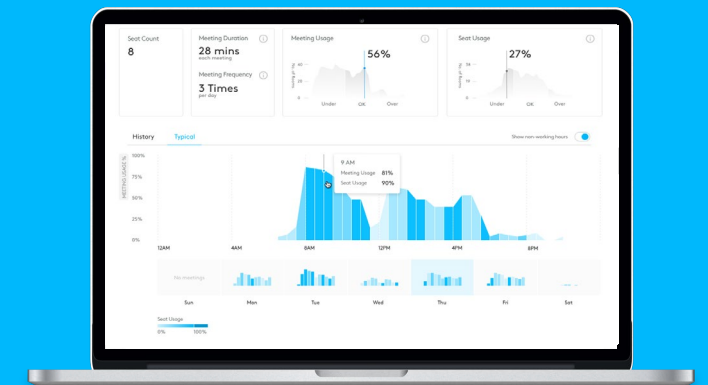
### INSIGHTS



Check room and device status / info from anywhere



Change product firmware and settings at scale



Measure room usage & technology adoption for better decision making



# EXTENDED SERVICE & SUPPORT

Logitech offers extended warranty and premier service plan options to protect customer investments, meet customer service level requirements, maximize value, and ensure optimal performance.



## LOGITECH SELECT



24/7 Support

# ENHANCE PROFESSIONAL DEVELOPMENT



## FLEXIBLE SOLUTIONS FOR ANY EDUCATIONAL SETTING



Designed to **enhance collaboration and productivity** in any education environment from administrative spaces to classrooms.



Conference cameras and room solutions that reduce complexity, allowing clear and instruction where and when it's needed most to help educators and students thrive.

A modern administrative conference room with light blue walls and a curved ceiling. A woman in a yellow blazer stands at a large whiteboard on the left, which displays a flowchart. In the center, a long wooden table is surrounded by white chairs with blue accents. On the right wall, a large video conference screen shows four participants. A whiteboard on the far right also displays a flowchart. A white conference camera is mounted on the wall below the video screen. The room is well-lit with recessed ceiling lights and a modern lamp above the whiteboard.

# ADMINISTRATIVE CONFERENCE ROOMS



## RALLY BAR

All-in-one video bar for midsize rooms that allow you to start your meeting with just one touch and seamlessly connect Rally Bar to your preconfigured room solution.



### RALLY BAR MINI

The Rally Bar Mini is the perfect all-in-one solution for small rooms.



## TAP

Make video meetings simple to join with this touch controller with wireless and HDMI content-sharing





# TAP IP FOR TEAMS ROOMS ON ANDROID

One-touch join, easy content sharing, and center-of-room control for meeting rooms, promoting a consistent user experience for deployments running Microsoft Teams, Zoom or Google Meet.

## FEATURES

- 1 Pre-configured for Teams, Zoom, or Google Meet
- 2 Connect via ethernet or WiFi
- 3 One touch to join meetings
- 4 Multiple mounting options



[logitech.com/tapip](https://logitech.com/tapip)

# WHITEBOARD CAMERA WITH INTELLIGENT CAPTURE

## Reality

Most do have a digital whiteboard, but everyone still works on a physical whiteboard.

## Challenge

Ever been in a meeting where you can't read the whiteboard because of the person in front of it?

## Solution

Make the person transparent so the whiteboard and the person can BOTH be seen!





## SCRIBE

Share whiteboards into video meetings with this AI-powered whiteboard camera for Microsoft Teams Rooms





Before you speak  
**THINK**  
T is it True  
H is it Helpful  
I is it Inspiring  
N is it Necessary  
K is it Kind

A whiteboard with a hand-drawn diagram of a triangle with sides labeled  $a$ ,  $b$ , and  $c$ . A dashed vertical line represents the height  $h$ . To the right of the diagram, the area formula  $A = \frac{b \cdot h}{2}$  and the perimeter formula  $P = a + b + c$  are written in black marker. A tray of markers is attached to the bottom right of the whiteboard.

# SCRIBE WHITEBOARD CAMERA

PURPOSE-BUILT FOR EDUCATION

# SCRIBE

Whiteboard camera purpose-built to enhance collaboration experiences in and beyond the walls of class and conference rooms.

## FEATURES

- 1 Standard USB camera for any platform
- 2 Cat5e cabling
- 3 Presenter removal
- 4 Wireless share button



[logitech.com/scribe](https://www.logitech.com/scribe)



Simplify Class Scheduling & Wayfinding  
Help students effortlessly find their way around, see room occupancy, see class details, and maximize room usage with support for adhock scheduling



**TAP SCHEDULER SCHEDULING & WAYFINDING SOLUTION**



## **TAP SCHEDULER**

Purpose-built scheduling panel that makes it easy to see meeting details and reserve a room for ad hoc or future meetings



# TAP SCHEDULER FOR TEAMS ROOMS

Purpose-built scheduling panel to see meeting details and reserve a room for ad hoc or future meetings.

## FEATURES

- 1 Purpose-built for stand up platforms
- 2 Easy cable management
- 3 Available in white and graphite
- 4 Multiple mounting options in the box



[logitech.com/tapscheduler](https://logitech.com/tapscheduler)

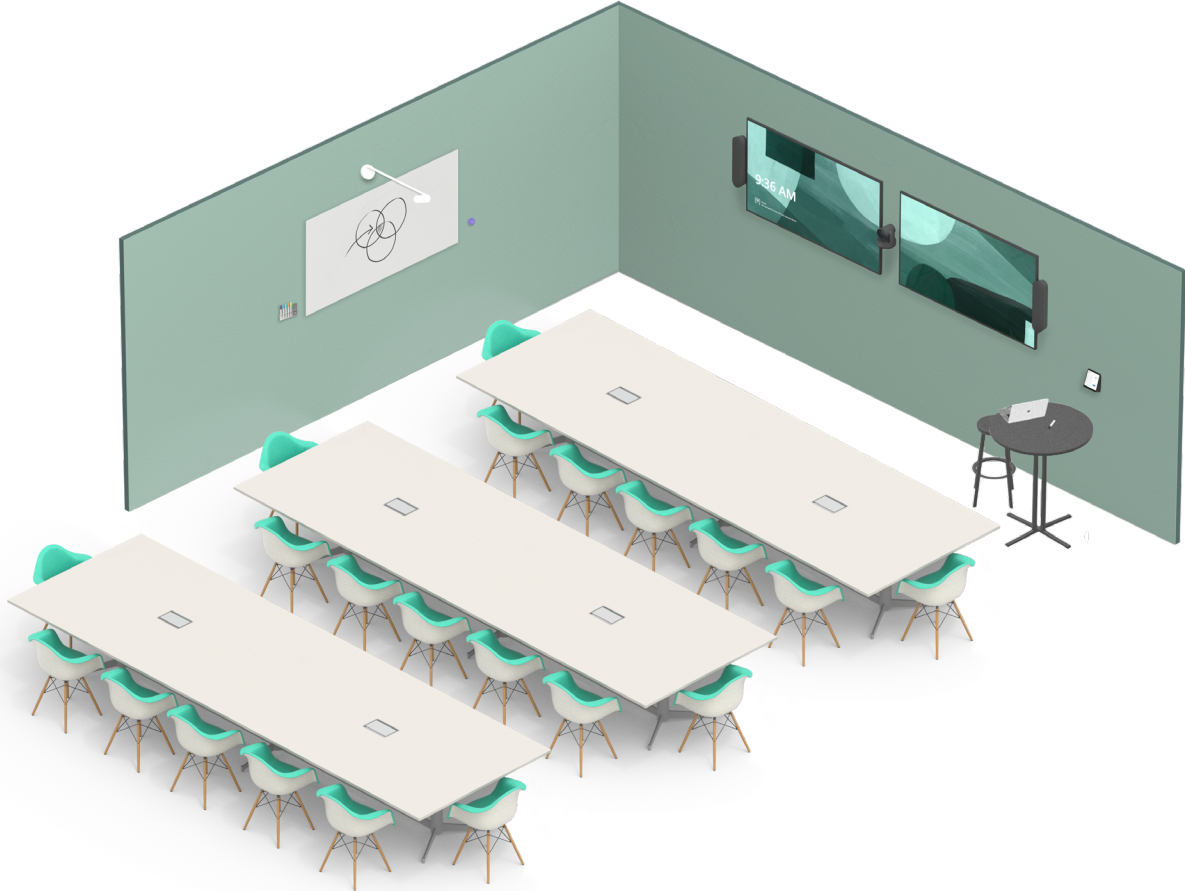


# HYBRID CLASSROOM

LOGITECH ROOM SOLUTIONS FOR ZOOM ROOMS

logitech

# TRAINING CENTER



Logitech Large Room Bundle



Rally PTZ Camera



Rally Mic Pod



Tap Scheduler  
(not shown)



Spotlight Remote



Scribe Whiteboard Camera



# BOARDROOM

---



Logitech Large Room Bundle



Rally PTZ Camera



Rally Mic Pod



Scribe Whiteboard Camera



Tap Scheduler  
(not shown)



Spotlight Remote



# LOGITECH FOR ESPORTS



80%

of esports student-athletes are first time participants in extracurricular activity



GPA

+1.7

increase in average GPA

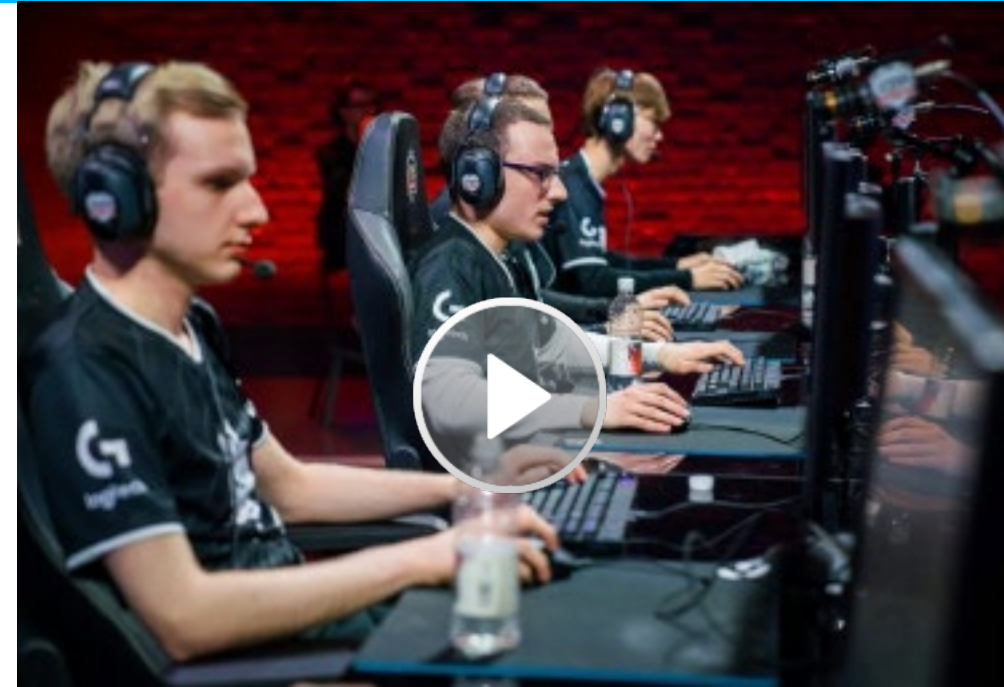


10%

improvement in school attendance

**WHY ESPORTS?** Esports in schools is at the confluence of some of the most important drivers in education. A well implemented esports program can promote student engagement, inclusivity, college recruitment, and retention by blending online and offline campus experiences—which ultimately prepares students for future careers.

- 97% of boys and 83% of girls ages 13-17 identify as gamers.
- Expand critical thinking and Social Emotional Learning for students.
- Improve Communication Skills - One of the few sports that has constant communication and collaboration.
- Drive a passion for STEM programs - more than 60% of the League of Legends players major in STEM.



Dedication to peak performance and advancing play are attributes Logitech G shares with esports professionals. We are proud and humbled to support the best players, in addition to all players, around the world.



C925E



C930E



BRIO



PRO X GAMING HEADSET



PRO WIRED GAMING KEYBOARD



PRO WIRELESS GAMING MOUSE

# WHY LOGITECH FOR EDUCATION?



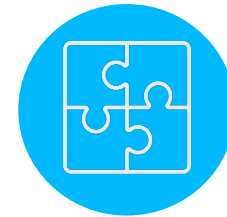
**TRUSTED**



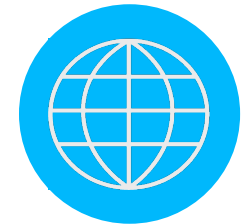
**SIMPLE**



**COST-EFFECTIVE**



**FLEXIBLE**



**SCALABLE**

# PUBLIC SECTOR TEAM



**ROSE LOCASTRO**  
Head of Public Sector Sales  
rlocastro@logitech.com



**KRISTIN FORD**, Account Manager  
NORTHWEST: WA, OR, ID, NV, UT, CO, MT, WY, AK



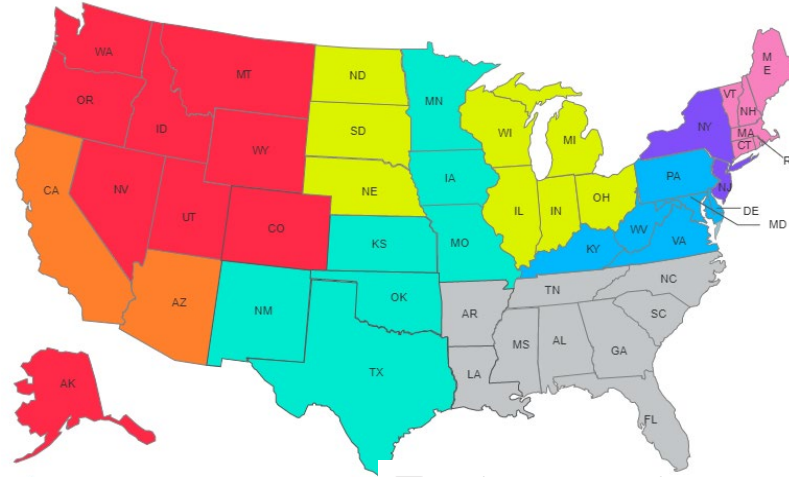
**BRITTIN ENGLERT**, Account Manager  
WEST: AZ, CA, HI



**MATT CORICH**, Account Manager  
MIDWEST: IL, IN, MI, WI, OH, NE, ND, SD



**MONICA LEROY**, Account Manager  
SOUTHWEST: TX, NM, OK, KS, MO, IA, MN



- Northwest: Kristin Ford
- West: Britt Englert
- Southwest: Monica LeRoy
- Midwest: Matt Corich
- New England: Joel Johnson
- Northeast: Miguel Maldonado
- Mid-Atlantic: Marc Jones
- Southeast: Chad Medlin



**JOEL JOHNSON**, Sr. Account Manager  
NEW ENGLAND: CT, ME, MA, NH, RI, VT



**MIGUEL MALDONADO**, Account Manager  
NORTHEAST: NY, NJ



MID ATLANTIC: DC, DE, KY, MD, PA, VA, WV  
**DANIEL MASTRO**, Inside Sales Rep



**CHAD MEDLIN**, Account Manager  
SOUTHEAST: AL, FL, GA, NC, SC, TN, AR, LA, MS

## FEDERAL TEAM

### INSIDE SALES REPRESENTATIVES



**SCOTT CAMPAGNOLO**  
Inside Sales Rep



**KELLY ROGERS**  
Inside Sales Rep



**DANIEL MASTRO**  
Inside Sales Rep

### SALES ENGINEERING



**FRANK QUINONEZ**  
Sr. Sales Engineer

### INDUSTRY SOLUTIONS



**ROSEANNE COHEN**  
Industry Solutions, Public Sector



**VANESSA SIEM**, Principal  
Federal Account Manager



**YAMEEN KHAN**  
Federal Account Manager



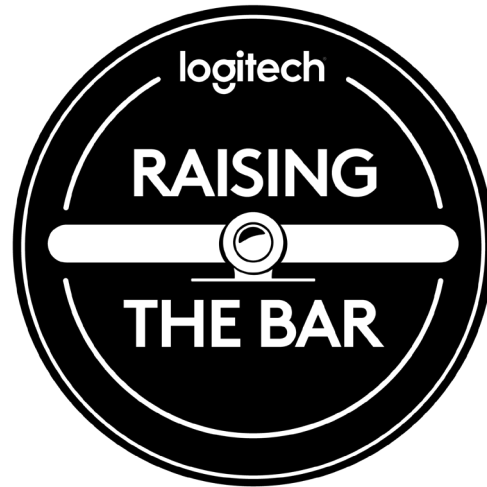
# COME LEARN MORE WITH US!

## JOIN US FOR TALK TECHIE TO ME

A virtual forum for IT leaders on collaboration and productivity.

### Talk Techie To Me Events

- Tues, May 2 | Virtual
- Tues, June 6 | Virtual



### Technology Innovation Roadshow "Raising the Bar" Events

- Wed, April 25 | Houston
- Thurs, April 27 | Dallas

*Contact your Logitech AM  
for a personal invitation.*


## HYFLEX

### COLLABORATIVE CONFERENCE

Designing a Hybrid-Flexible Future for  
ALL K-12 Students and Adult Learners

Keynote - Dr. Brian Beatty,  
San Francisco State University



 **Monday**  
**June 26, 2023**  
9 AM - 4 PM EST



- In-Person: University at Albany, SUNY
- Synchronous: Zoom
- Asynchronous: Online

### HyFlex Collaborative Conference Inaugural Event | Diamond Sponsor

- Mon, June 26 | 9 am – 4 pm  
University at Albany, SUNY  
**[bit.ly/2023HyFlexConference](https://bit.ly/2023HyFlexConference)**  
**[bit.ly/2023HyFlexReg23](https://bit.ly/2023HyFlexReg23)**





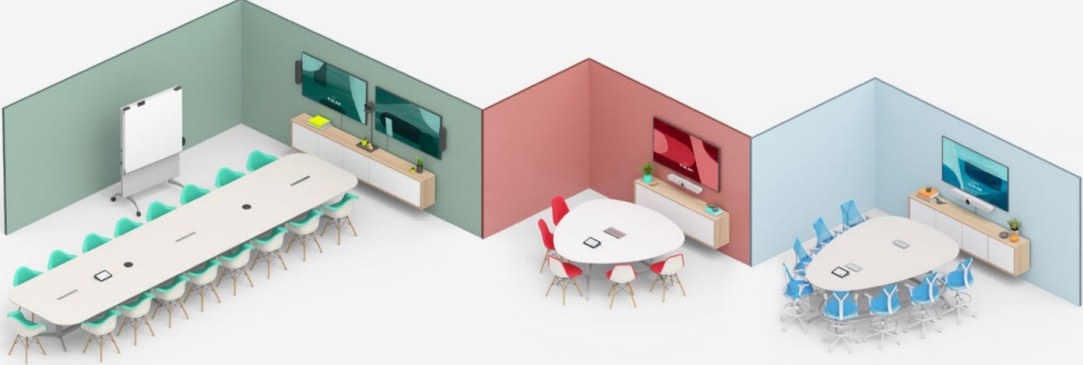
**TAKE A VIRTUAL TOUR  
WITH LOGITECH & STEELCASE**

<https://bit.ly/3INhjPq>

# BUILD COLLABORATION SPACES

---

logitech



**Build A High-Performing Collaboration Space**

Use this easy online tool to configure any meeting room with the right video conferencing solution. Save your configuration for future reference.

GET STARTED

<https://www.logitech.com/en-us/room-configurator.html>



A bright, modern classroom with desks, a whiteboard, and a window. The whiteboard has a diagram of a triangle with height 'h' and base 'a', and the formulas  $A = \frac{bh}{2}$  and  $P = a + b + c$ . A clock on the wall shows approximately 10:10. A sign on the wall reads "Before you speak THINK To a Fool He is a Fool To a Wise Man He is a Helper".

# Q & A

**Please use the Q&A Feature to  
Submit Additional Questions**

**logitech**<sup>®</sup> | for education

Discover more at [www.logitech.com/business](http://www.logitech.com/business)



# OPTIMIZE TEACHING & LEARNING EXPERIENCES FOR ANYONE, ANYWHERE

Logitech delivers innovative, affordable, flexible communication and productivity solutions that optimize communication, foster effective engagement, and make collaboration easy for anyone, anywhere. Our standards-based, plug-and-play solutions are easy-to-use, deploy, and manage and make it simple to create thriving virtual learning environments.