



**Welcome to the Webcast**

LEADERSHIP PANEL:

# **BUILDING A CONNECTED CAMPUS**

Innovative Strategies to  
Attract, Engage & Retain Students

Moderated by: Roseanne Cohen  
Public Sector | Industry Solutions Marketing  
Logitech, Inc.



# BUILDING A CONNECTED CAMPUS



WELCOME TO OUR  
UNIVERSITY



# OUR PANELISTS



**Sam Sudhakar, Ph.D.**  
CIO & VP for IT Services



**Richard Mitchell**  
Senior AV Design Engineer



**Don Hall**  
Manager of Voice & Video



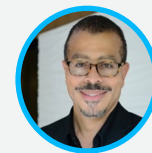
**Reggie Smith III, Ph.D.**  
Chief Executive Officer



# How have advancements in technology changed distance learning?



*“The global pandemic brought video collaboration to the forefront as a critical component in the overall distance learning toolkit to help deliver high-quality interactive teaching and learning experiences.”*



**Reggie Smith III, Ph.D.**  
Chief Executive Officer

**How have  
student and staff  
expectations  
defined or  
reshaped your  
vision for a  
Connected  
Campus?**



# CALIFORNIA STATE UNIVERSITY, SAN BERNARDINO



Need to facilitate simultaneous teaching to students in class and in remote locations based on the pedagogical priorities set by instructors.



Equipment upgrades to 280 classrooms on the San Bernardino and Palm Desert campuses with state-of-the-art audio-visual communication equipment. Logitech C930e Webcams at Podium



Classrooms are currently being upgraded.



*"The Next Generation Smart Classrooms (NGSC) at California State University San Bernardino will give faculty the flexibility to teach and engage students in a variety of teaching modalities and provide educators the freedom to choose which modalities are best suited to support student success."*



**Sam Sudhakar, Ph.D.**  
CIO & VP for IT Services

# DUKE UNIVERSITY



Solution flexible enough to support hybrid teaching in a variety of settings, relatively low-cost, and made of components that could be repurposed once the pandemic ends.



50 Mobile Carts, Logitech Rally Plus Video Conferencing Kit, Zoom Room Licenses, 65" Display, iPad, Computer



The carts have been used by the Trinity College of Arts and Sciences, the Duke Law School, and the Fuqua School of Business. Additionally, the Pratt School of Engineering used the design to build another 10 carts.



*"We basically put our conference room on a cart. In a matter of days, we deployed 50 additional rooms on campus that just happen to be on wheels. They are incredibly versatile and can be used in a variety of settings. They are simple to set up, monitor and troubleshoot so they save time, and they are relatively low-cost. They've worked wonderfully."*



**Richard Mitchell**  
Office of Information Technology  
Senior AV Design Engineer

# RADFORD UNIVERSITY



Support live interactive discussions between in-class and remote participants as well as blended learning, without creating cognitive overload for participants, while being attentive to external infrastructure readiness.



Combination of flexible, standards-based solutions to include: Logitech MeetUp, Logitech PTZ Pro2, Logitech Swytch, Logitech Scribe, Logitech 930e, Logitech Brio webcam and Zoom Room licenses.



Flexible mobile and room-based video collaboration solutions easily adopted by staff, deliver multi-platform support, and support a wide variety of synchronous and asynchronous use cases (lecture capture, blended learning, LMS integrations, access to broadband, virtual testing, etc.)



*“Video collaboration has enabled Radford University to deliver immersive experiences for our students that expands opportunities for learning, reaching participants around the globe in a way we’ve not experienced until now.”*



**Donald Hall**  
Manager of Voice & Video



**Creating  
engaging  
and equitable  
learning  
environments.**



**What's  
next  
for the  
future  
classroom?**





# OPTIMIZE TEACHING & LEARNING EXPERIENCES FOR ANYONE, ANYWHERE

Logitech delivers innovative, affordable, flexible communication and productivity solutions that optimize communication, foster effective engagement, and make collaboration easy for anyone, anywhere. Our standards-based, plug-and-play solutions are easy-to-use, deploy, and manage and make it simple to create thriving virtual learning environments.

# REIMAGINING TEACHING & LEARNING



01



IN PERSON



02



REMOTE



03



HYBRID/HYFLEX

# EMPOWERING EDUCATION

Building dynamic and collaborative teaching and learning experiences to improve student outcomes.

## ATTRACT



**OPTIMIZE TEACHING & LEARNING EXPERIENCES**

## ENGAGE



**BRING LESSONS TO LIFE**

## RETAIN



**MAKE LEARNING ACCESSIBLE & EQUITTABLE**

# LOGITECH FOR EDUCATION

Durable, flexible, adaptable, easy-to-use solutions for any education environment.



Remote/Personal Workspaces



In Person



Hybrid



Recording/Streaming Content

## Personal Productivity Devices



Headset



Webcam



Keyboards and Mice



Microphones

## Classrooms/Shared Spaces



Conference  
Cameras



Room  
Solutions



Whiteboarding

# SEAMLESS CONNECTIVITY

WE WORK WITH THE COLLABORATION PLATFORMS **EDUCATION** CUSTOMERS USE



## CLOUD VIDEO



## PC ECOSYSTEM



## AV & DESIGN



logitech™

**We're helping schools  
make hybrid learning a success**



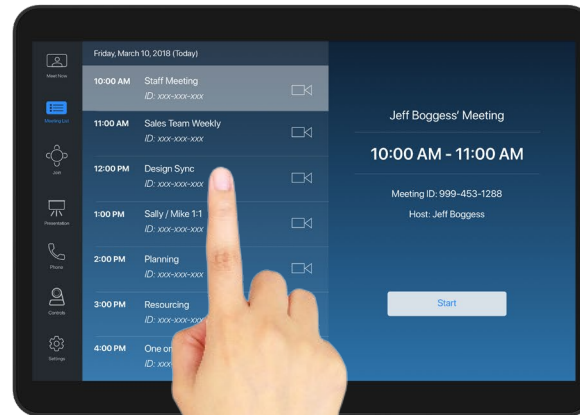
LOGITECH CONFIDENTIAL



# A SINGLE USER EXPERIENCE IN EVERY ROOM, EVERYWHERE



Simplified user interface enables educators to focus on **curriculum, engagement,** and well being of **students.**



# ON CAMPUS SOLUTIONS



MEETUP WITH TAP FOR  
SMALL MEETING ROOMS



MEETUP WITH TAP  
+ EXPANSION MIC\* FOR  
SMALL MEETING ROOMS

UP TO 8 SEATS WITH EXP. MIC



RALLY WITH TAP FOR  
MEDIUM MEETING ROOMS



RALLY PLUS WITH TAP FOR  
LARGE MEETING ROOMS



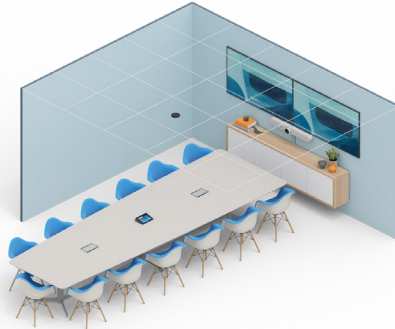
# CUSTOM CLASSROOM CONFIGURATIONS



# ON CAMPUS SOLUTIONS



RALLY MINI BAR



RALLY BAR



RALLY PLUS WITH ROOMMATE



# FLEXIBLE **CLASSROOM** CONFIGURATIONS





# SCRIBE WHITEBOARD CAMERA FOR EDUCATION

Simplify Class Scheduling & Wayfinding  
Help students effortlessly find their way around, see room occupancy, see class details, and maximize room usage with support for adhock scheduling



**TAP SCHEDULER SCHEDULING & WAYFINDING SOLUTION**

# RALLY CAMERA

Studio quality video

Multi-mount support

Smarter meetings with RightSense™ Technology



Ceiling



Wall



Standalone



# SWYTCH

Connect a laptop to a room system's AV equipment for use with any video meeting or webinar

Universal USB  
Type A+C Connector



USB Power Delivery  
(Type C 60w)

Laptop audio plays through  
conference camera speakers

Display & content sharing up  
to 4K/60 fps



Camera resolution  
up to 4K/30 fps



Magnetic dock

USB + HDMI on  
one cable



Works with Tap rooms,  
including Microsoft Teams  
Rooms and Zoom Rooms

# LOGITECH RIGHTSENSE:

## Smart Automation for Better Video Meetings



Logitech RightLight™



Logitech RightSight™



Logitech RightSound™



Optimize light balance and color to prioritize the appearance of faces and render natural-looking skin tones, even in dim or backlit conditions.



Camera control automatically moves the lens and adjusts the zoom to comfortably frame meeting participants just right in rooms of any shape or size.



Improve voice clarity by suppressing background noise and echo, auto-leveling voices, and focusing on active speakers so that everyone in the meeting can hear and be heard.

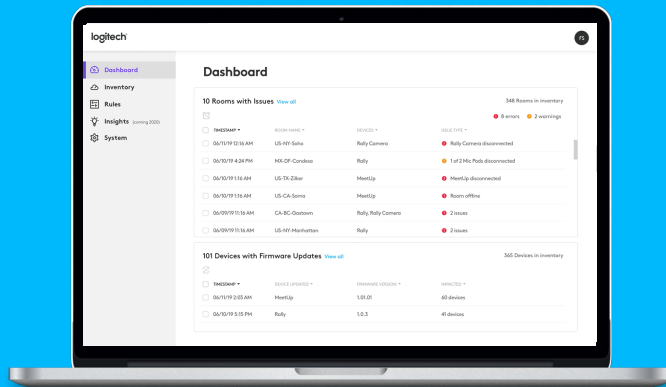
# LOGITECH SYNC:

## Seamless Administration and Control

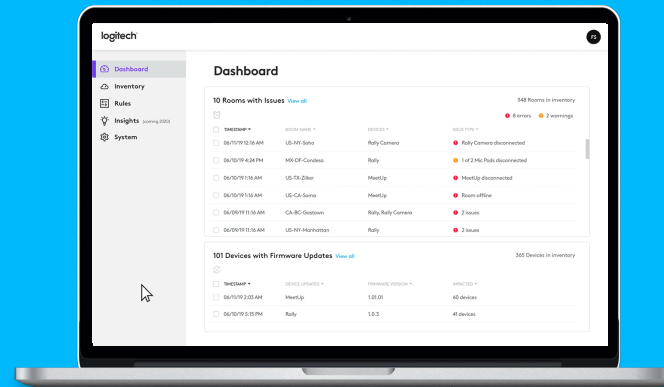
### MONITORING

### MANAGEMENT

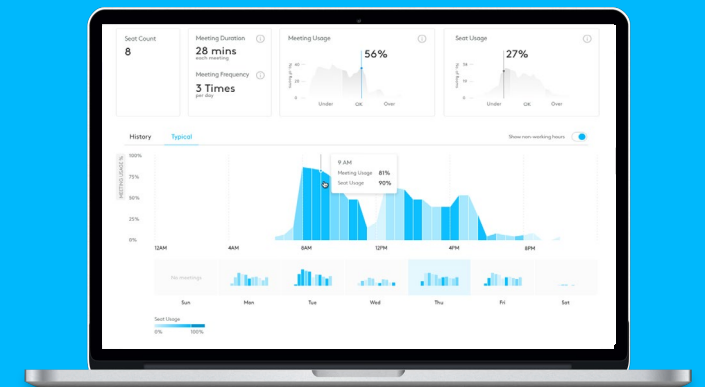
### INSIGHTS



Check room and device status / info from anywhere



Change product firmware and settings at scale



Measure room usage & technology adoption for better decision making

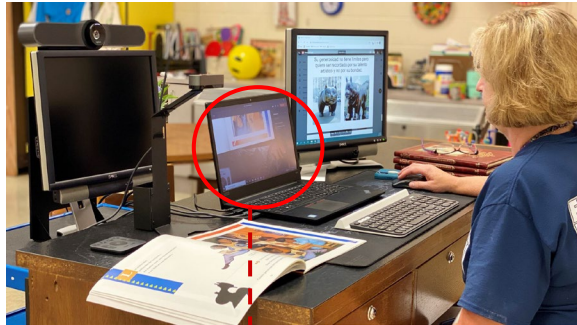
# EXTENDED WARRANTY

Logitech's extended warranty provides additional coverage options to help protect your investment, maximize its value, and ensure optimal performance of your Logitech video collaboration solutions.

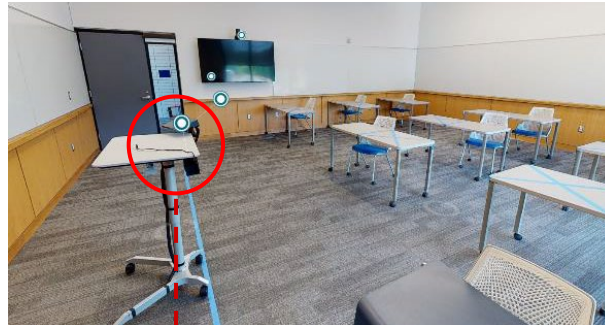


# ROOM DEPLOYMENT OPTIONS

## BYOD



## DEDICATED COMPUTE



## APPLIANCE



Ultimate **choice** and **flexibility** for classroom integration.

# FLEXIBLE OPTIONS FOR ANY ROOM

## BYOD



MEETUP



RALLY



RALLY PLUS

## DEDICATED COMPUTE



SMALL ROOM BUNDLE



MEDIUM ROOM BUNDLE



LARGE ROOM BUNDLE

## APPLIANCE



RALLY MINI BAR



RALLY BAR



ROOMMATE

# MOBILE LEARNING SOLUTIONS



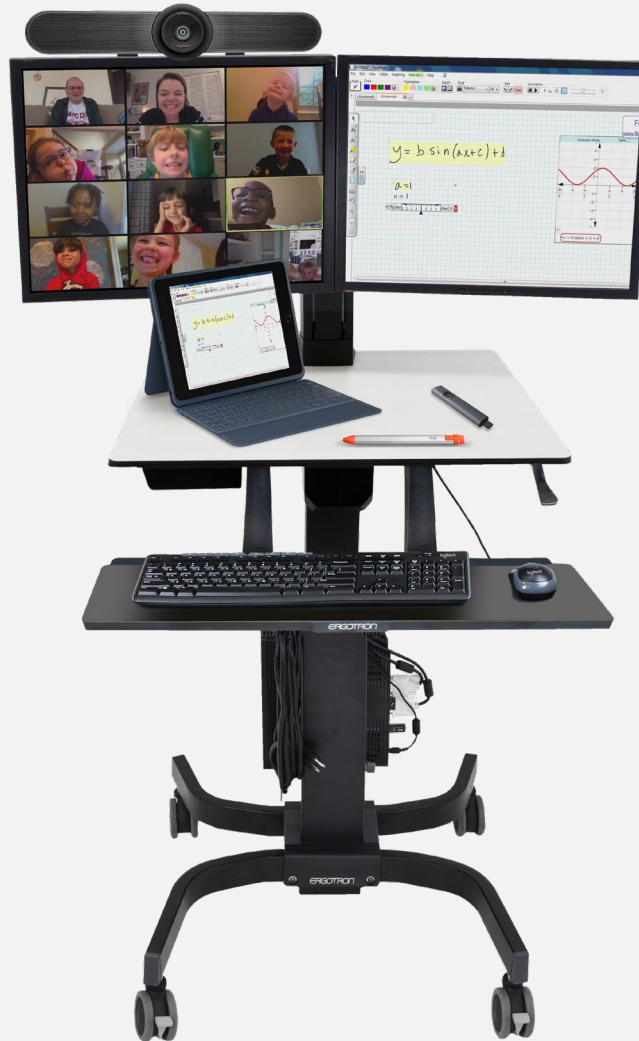
Logitech MeetUp



iPad Keyboard Case



Logitech Crayon



Spotlight Presenter



Wireless Mouse (MX Anywhere 2 or 3)



K120 Wired or K270 Wireless

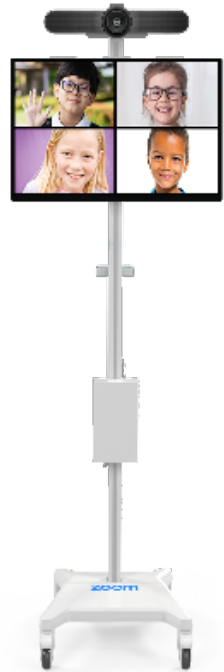


Silicone Cover

# MOUNTS, CARTS AND ACCESSORIES



Tripod Mount for Logitech MeetUp



Virtual Teaching Assistant with Logitech MeetUp



Logitech [Desktop MeetUp Mount](#)



Logitech [MeetUp Case](#)



# ROOM CUSTOMIZATION ACCESSORIES



# EMPOWER ENGAGED LEARNING

ON-THE-GO

IN THE CLASSROOM OR TEACH FROM HOME

BASIC

GOOD

GREAT

BETTER

BEST



**C505E**

**C505E WEBCAM**

720p/30 fps  
60° FOV  
Fixed Focus  
Auto Light Correction  
Single Omnidirectional Mic  
2 Year Limited Warranty



**C920E**

**C920E HD WEBCAM**

1080p/30 Full HD  
78° FOV  
1.2x HD Digital Zoom  
RightLight 2  
2 Year Limited Warranty



**C925E**



**C925E WEBCAM**

1080p/30 Full HD  
78° FOV  
1.2x HD Digital Zoom  
RightLight 2  
3 Year Limited Warranty  
Business Level Support



**C930E**



**C930E WEBCAM**

1080p/30 Full HD  
90° FOV  
4x HD Digital Zoom  
RightLight 2  
3 Year Limited Warranty  
Business Level Support



**BRIO**



**BRIO ULTRA HD PRO WEBCAM**

4K Ultra HD  
65°, 78°, and 90° FOV  
5x HD Digital Zoom  
RightLight 3 with HDR  
3 Year Limited Warranty  
Business Level Support

# LECTURE CAPTURE & STREAMING



## Logitech Capture Software

- STREAMCAM
- STREAMCAM PLUS
- BRIO 4K PRO
- BRIO STREAM
- C930E
- C920 HD PRO
- C920s HD PRO
- 1080P PRO STREAM
- C922 PRO STREAM
- C922X PRO STREAM

- Logitech Capture makes lecture capture with your webcam easy, fast, and intuitive.
- Record from multiple sources, create mobile-friendly vertical videos, and stream live to YouTube using a virtual camera - all from one intuitive interface.
- Multi-stream live or recorded lessons using two Brio webcams

- Download Capture Software: [www.logi.com/capture](http://www.logi.com/capture)
- Logitech Capture: [Overview Video](#)
- Video: [Creative Uses of Logitech Capture](#)
- Multi-stream live or record lessons with two Brio webcams: [Download Free App](#)



# ELIMINATE NOISE & DISTRACTIONS

ON-THE-GO

IN THE CLASSROOM OR TEACH FROM HOME

GOOD

GREAT

BETTER

BEST



**H570E**

**H570e WIRED HEADSET**  
USB-A  
AEC + Noise Cancellation  
In-Line Controls  
2 Year Limited Warranty  
Business Level Support

Mono and Stereo Configurations



**H650E**

**H650e WIRED HEADSET**  
USB-A  
Wideband Audio + DSP  
In-Line Controls  
Premium Comfort  
2 Year Limited Warranty  
Business Level Support

Mono and Stereo Configurations



**H820E**

**H820e WIRELESS HEADSET**  
USB-A  
Charging Stand  
10 Hours Talk Time  
DECT Wireless - up to 300ft Range  
2 Year Limited Warranty  
Business Level Support

Mono and Stereo Configurations



**ZONE WIRED**

**ZONE WIRED**  
USB-C or USB-A  
Flip to Mute  
Noise-Canceling Mic  
In-Line Controls  
40mm Low Distortion Drivers  
2 Year Limited Warranty  
Business Level Support



**ZONE WIRELESS**

**ZONE WIRELESS**  
Bluetooth 5.0  
Qi Wireless Charging  
14 Hours Talk Time  
Flip to Mute  
Active Noise Cancellation  
Up to 100ft Range  
2 Year Limited Warranty  
Business Level Support

# LOGITECH FOR ESPORTS



80%

of esports student-athletes are first time participants in extracurricular activity



GPA

+1.7

increase in average GPA

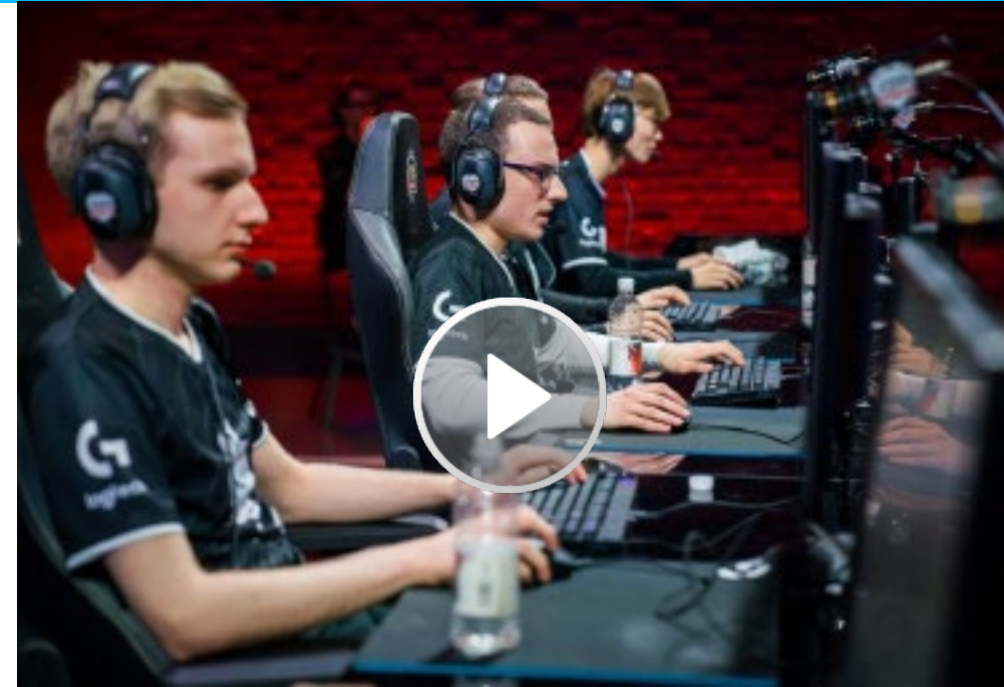


10%

improvement in school attendance

**WHY ESPORTS?** Esports in schools is at the confluence of some of the most important drivers in education. A well implemented esports program can promote student engagement, inclusivity, college recruitment, and retention by blending online and offline campus experiences—which ultimately prepares students for future careers.

- 97% of boys and 83% of girls ages 13-17 identify as gamers.
- Expand critical thinking and Social Emotional Learning for students.
- Improve Communication Skills - One of the few sports that has constant communication and collaboration.
- Drive a passion for STEM programs - more than 60% of the League of Legends players major in STEM.



Dedication to peak performance and advancing play are attributes Logitech G shares with esports professionals. We are proud and humbled to support the best players, in addition to all players, around the world.



C925E



C930E



BRIO



PRO X GAMING HEADSET



PRO WIRED GAMING KEYBOARD



PRO WIRELESS GAMING MOUSE

# LOGITECH GRANTS SERVICES PROGRAM



Unlock **funding** for **Logitech** solutions!

## Our Mission

To help eligible organizations unlock funding for Logitech solutions that support vital community services and outreach programs.



PERSONAL COLLABORATION



CONFERENCE ROOM CAMERAS



ROOM BASED VIDEO COLLABORATION SOLUTIONS



# BUILD YOUR IT FUNDING STRATEGY

Combined with traditional grants, relief funds are vital lifelines to higher education institutions in need of digital transformation, operational shifts, and technology investments.

To help institutions develop a funding strategy for their technology needs, Logitech partnered with The Grants Office to create a **COVID Relief Funding Guide for Remote & Hybrid Learning**.

[DOWNLOAD GUIDE](#)



The global health crisis served as a catalyst for higher education institutions to better utilize technology to support continuity, drive stabilization, and ensure services are accessible to all. Fortunately, Congress has passed three significant funding packages to assist colleges and universities in planning, preparation, and response to COVID-19.

Combined with traditional grants, relief funds are vital lifelines to higher education institutions in need of digital transformation, operational shifts, and technology investments. To help institutions develop a funding strategy for their technology needs, Logitech partnered with The Grants Office to create a **NEW COVID Relief Funding Guide for Remote & Hybrid Learning** that is packed full of valuable information to include:

- Detailed information on COVID relief funding for Higher Education
- Funding timeline with important due dates
- Who in your organization should be involved
- Preview of the top traditional grants funded in 2021-2022

## DOWNLOAD GUIDE

First Name

Last Name

Company Name

Email Address


Phone Number

United States

State

By supplying my contact information, I authorize Logitech to contact me with personalized communications about Logitech's products and services, which per Logitech's Privacy Policy I may opt-out of at any time.

DOWNLOAD

I'm not a robot 

# BUILD AND SERVE COMMUNITIES



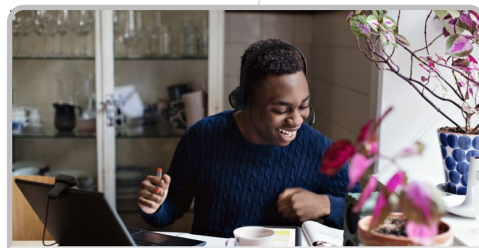
HYBRID CLASSROOMS



STEM OR STEAM LABS



REMOTE EDUCATORS



AFTER SCHOOL PROGRAMS



PROGRAMS FOR ALL



UNIVERSITY HOSPITAL



LOCAL COMMUNITY COLLEGES



LOCAL HIGH SCHOOLS

## Learning Management System





# WHY LOGITECH FOR EDUCATION?



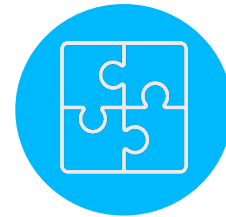
**TRUSTED**



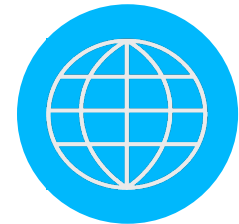
**SIMPLE**



**COST-EFFECTIVE**

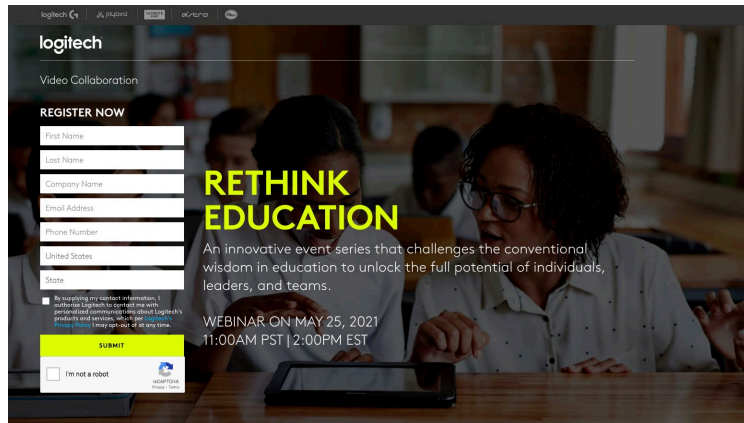


**FLEXIBLE**



**SCALABLE**

# COME LEARN MORE WITH US!



## ReThink Education Webinar Series **THE BIOLOGY OF LEARNING** **FEATURING DR. ANDREW HUBERMAN**

- Sept 30 | 12 pm PDT



## Virtual Coffee Tasting: "Raising the Bar" on IT Modernization

- October 21 | 9:30 am PDT  
*Contact your Logitech AM for a personal invitation.*

## **JOIN US FOR** **TALK TECHIE TO ME**

A virtual technical forum  
for video collaboration

Every other Tuesday | 10am PDT

## Talk Techie To Me Events

- Oct. 5 – Simplifying the Conference Room Experience
- Oct. 19 – Zone True Wireless and Zone True Wired

# PUBLIC SECTOR TEAM



**ROSE LOCASTRO**  
Head of Public Sector Sales



**KRISTIN FORD**, Account Manager  
NORTHWEST: WA, OR, ID, MT, WY, AK



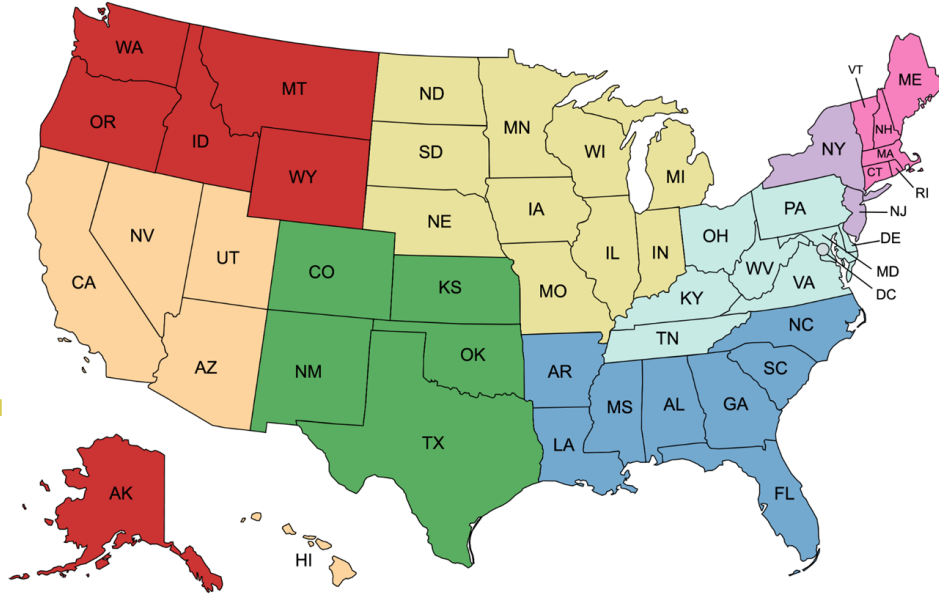
**BRITTIN ENGLERT**, Account Manager  
WEST: CA, NV, UT, AZ, HI



**MATT CORICH**, Account Manager  
MIDWEST: ND, SD, NE, MN, IA, MO, WI, IL, IN, MI



**MONICA LEROY**, Account Manager  
SOUTHWEST: TX, NM, OK, KS, CO



**VANESSA SIEM**, Solution Advisor  
FEDERAL



**MARK SOKOLOFF**, Account Manager  
NEW ENGLAND: ME, VT, NH, MA, CT, RI



**MIGUEL MALDONADO**, Account Manager  
NORTHEAST: NY, NJ



**MARC JONES**, Account Manager  
MID ATLANTIC: DE, KY, OH, TN, VA, WV, PA



**CHAD MEDLIN**, Account Manager  
SOUTHEAST: NC, AR, LA, MS, AL, GA, SC, FL

## ISR TEAM



**SCOTT CAMPAGNOLO**  
Inside Sales Rep



**KELLY ROGERS**  
Inside Sales Rep



**DANIEL MASTRO**  
Inside Sales Rep



**YAMEEN KHAN**  
Inside Sales Rep



**NICK NICHOLSON**  
Inside Sales Engineer

Contact us at [www.logitech.com/vcsales](http://www.logitech.com/vcsales)

A bright, modern classroom with desks, a whiteboard, and a window. The whiteboard has a diagram of a triangle with height 'h' and base 'a', and the formulas  $A = \frac{bh}{2}$  and  $P = a + b + c$ . A clock on the wall shows approximately 10:10. A sign on the wall says "Before you speak THINK To a Fool He is a Fool To a Wise Man He is a Helper".

# Q & A

**Please use the Q&A Feature to  
Submit Additional Questions**

**logitech**<sup>®</sup> | for education

Discover more at [www.logitech.com/vc](http://www.logitech.com/vc)